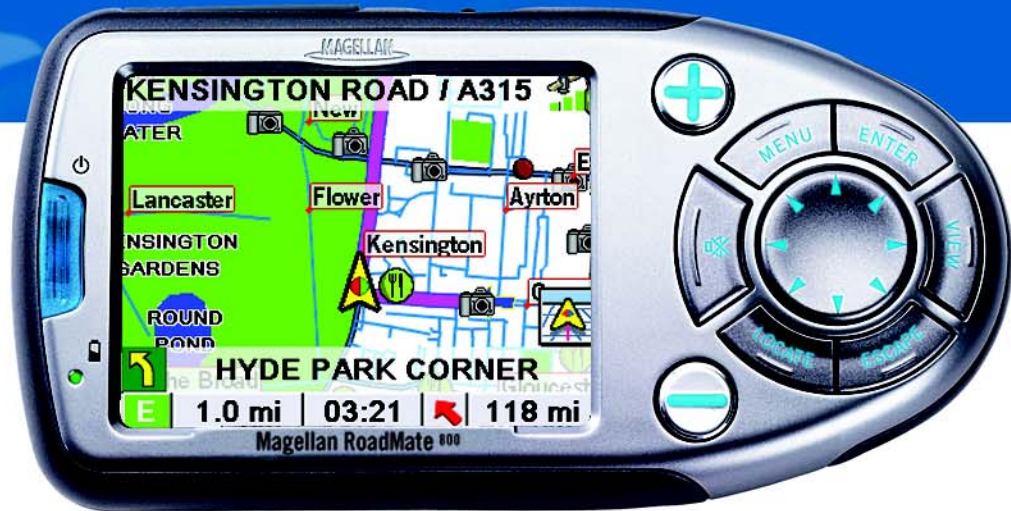


# Magellan® RoadMate™

## Reference Manual



## Instructions for Operating the Magellan RoadMate 800

# IMPORTANT SAFETY WARNINGS

The Magellan RoadMate 800 is a vehicle-navigation aid designed to assist you in arriving at your selected destinations. When using the Magellan RoadMate, these safety rules must be followed to prevent accidents that can result in injury or death to yourself or others:

- Remain attentive to driving and look at the screen only briefly. Voice prompts will guide you to your destination. The driver must not enter data or program the unit unless the vehicle has come to a complete stop. Only the passenger should enter data or program the unit when the vehicle is moving.
- It is your responsibility to comply with all traffic regulations.
- Every attempt is made to ensure that the database is accurate. However, roadways, points of interest (POIs) and business and service locations may change over time. The database does not include, analyse, process, consider or reflect any of the following: legal restrictions (such as vehicular type, weight, height, width, load and speed restrictions); road slope or grade; bridge height, width, weight or other limits; population density; Area quality or safety; availability or proximity of law enforcement, emergency rescue, medical or other assistance; construction work zones or hazards; road or lane closures; road, traffic or traffic facilities' safety or condition; weather conditions; pavement characteristics or conditions; special events; traffic congestion. It is your responsibility to disregard any unsafe, hazardous or illegal routing suggestions.
- Keep the Magellan RoadMate safe from extreme temperature conditions. For example, do not leave it exposed to direct sunlight for an extended period of time.
- Take care when mounting the unit in your vehicle, whether using the windscreen mount or other mount or accessories, that it does not obstruct the driver's view of the road, interfere with the operation of the vehicle's safety devices such as air bags, or present a hazard to occupants of the vehicle should the unit become dislodged while driving. You assume the risks associated with damage to your vehicle or vehicle occupants as the result of your choices in mounting the unit.
- Laws in some areas prohibit the wearing of stereo headphones when operating a motor vehicle. Please contact your area's Department of Motor Vehicles for information.
- The battery in the Magellan RoadMate is rechargeable and should not be removed. If it needs to be replaced, please follow the instructions in this document and dispose of the old battery in accordance with local hazardous material requirements.
- Extreme temperatures may cause the Magellan RoadMate to stop working. Do not leave it exposed to extreme heat or cold for long periods of time. Additionally, the battery will stop charging when the ambient temperature is above 113°F (45°C) or below 32°F (0°C).

## About Charging the Magellan RoadMate 800

- Use only the AC adapter approved for/supplied with your Magellan RoadMate 800. The use of a different type of AC adapter will result in malfunction and/or danger.
- Use only the car charger approved for/supplied with your Magellan RoadMate 800. The use of another type of car charger will result in malfunction and/or danger.
- The Magellan RoadMate 800 is intended to be supplied with a LISTED Power Unit marked with "LPS", "Limited Power Source" and "output rated + 5 V DC / 1.0 A".
- Use the USB cable approved for/supplied with your Magellan RoadMate 800.
- Use the battery provided with your Magellan RoadMate 800 or its identical replacement approved for the Magellan RoadMate 800.
- For safety reasons, the battery in your Magellan RoadMate 800 will stop charging when the ambient temperature is less than 0 °C (32 °F) or more than 45 °C (113 °F).

## About the AC Adapter

- Do not use the adapter in a high moisture environment. Never touch the adapter when your hands or feet are wet.
- Allow adequate ventilation around the adapter when using it to operate the device or charging the battery. Do not cover the AC adapter with paper or other objects that will reduce cooling. Do not use the AC adapter when it is inside a carrying case.
- Connect the adapter to a suitable power source. The voltage and earthing requirements are found on the product case and/or packaging.
- Do not use the adapter if the cord becomes damaged.
- Do not attempt to service the unit. There are no serviceable parts inside. Replace the unit if it is damaged or exposed to excess moisture.

## About the Battery

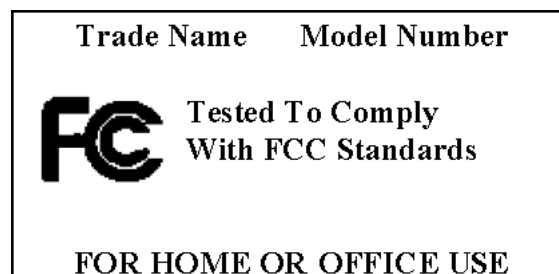
- Use the charger approved for/provided with your Magellan RoadMate 800.
- Do not mutilate, puncture or dispose of the battery in a fire. The battery may burst or explode, releasing hazardous chemicals.
- Important instructions (for service personnel only).
- **Caution:** Risk of explosion if battery is replaced by an incorrect type. Dispose of used batteries according to the instructions.
- Replace only with the same or equivalent type recommended by Magellan.
- The battery must be recycled or disposed of properly.
- Use the battery only in the specified equipment.

## INSTRUCTIONS TO THE USER

This equipment has been tested and found to comply with the limits for a class B digital device, pursuant to part 15 of the FCC Rules. These limits are designed to provide reasonable protection against harmful interference in a residential installation. This equipment generates, uses and can radiate radio frequency energy. If it is not installed and used in accordance with the instructions, it may cause harmful interference to radio communications. However, there is no guarantee that interference will not occur in a particular installation. If this equipment does cause harmful interference to radio or television reception, which can be determined by turning the equipment off and on, the user is encouraged to try to correct the interference by taking one or more of the following steps

- Reorient or relocate the receiving antenna.
- Increase the separation between the equipment and receiver.
- Connect the equipment into an outlet on a circuit different from that to which the receiver is connected.
- Consult the dealer or an experienced radio/TV technician for help.

In order to maintain compliance with FCC regulations, shielded cables must be used with this equipment. Operation with non-approved equipment or unshielded cables is likely to result in interference to radio and TV reception. Users are warned that if changes and modifications are made to the equipment without the approval of the manufacturer, their authority to operate this equipment could become void..



© 2005 Thales Navigation, Inc. All rights reserved. The Magellan Logo, Magellan, Magellan RoadMate, Turn it on and go, TrueView, QuickSpell, SmartDetour, TrueFix and SmartVolume are trademarks of Thales. No part of this user manual may be reproduced or transmitted in any form or by any means, electronic or mechanical, including photocopying and recording, for any purpose other than the purchaser's personal use, without the prior written permission of Thales.

631284-18 A

# TABLE OF CONTENTS

<b>Contact Information</b> .....	<b>v</b>
Technical Support .....	v
Warranty Service .....	v
Customer service .....	v
Registration .....	v
<b>Chapter 1: Information</b> .....	<b>1</b>
About Satellite Navigation .....	1
How Satellite Navigation Works .....	1
Line of Sight.....	1
A Word on the Safe Usage of GPS Maps .....	2
From Source to Destination .....	2
Placement of Your GPS Receiver for Optimal Satellite Reception .....	2
Signal Acquisition Time .....	2
GPS Maps and Your Safety .....	2
<b>Chapter 2: Magellan RoadMate</b> .....	<b>4</b>
Front View .....	4
Rear View .....	5
Top View .....	6
Bottom View .....	7
Left-hand side View .....	7
Right-hand side View .....	8
Cradle .....	8
Using Removable Storage Cards .....	9
To Insert the Storage Card:.....	9
To remove the Storage card:.....	9
Battery Removal and Installation .....	10
Removing the Battery.....	10
Installing the Battery .....	10
<b>Chapter 3: Vehicle Installation</b> .....	<b>11</b>
Installing the Windscreen Mount .....	11
<b>Chapter 4: Antenna Position</b> .....	<b>13</b>
<b>Chapter 5: Magellan RoadMate Tools Installation</b> .....	<b>14</b>
Installing the Software .....	14
Connecting Your Magellan RoadMate .....	14
<b>Chapter 6: Magellan RoadMate Music Manager</b> .....	<b>15</b>
<b>Chapter 7: Music Player</b> .....	<b>16</b>
Single Song Play .....	16
Multiple Song Play .....	16
Play .....	17
Create .....	17
Modify .....	17
Delete.....	17
Rename.....	18
Play Mode .....	18
List Songs .....	18
Equalizer .....	18
Help .....	18
<b>Chapter 8: Magellan RoadMate Photo Manager</b> .....	<b>19</b>
<b>Chapter 9: Photo Viewer</b> .....	<b>20</b>
View Single Photo .....	20
Previous Image (left arrow) .....	20
Zoom .....	20
Slideshow .....	21
Pan .....	21
Rotate Image .....	21
Next Image (right arrow) .....	21
ESC .....	21
Manage Photos .....	21

# TABLE OF CONTENTS

List View.....	21
Thumbnail.....	21
Rename.....	21
Properties.....	22
Tools.....	22
Preferences.....	22
Transfer Photos.....	22
Delete Files.....	22
About.....	22
<b>Chapter 10: Magellan RoadMate POI Manager .....</b>	<b>23</b>
Latitude.....	23
Longitude.....	23
Altitude.....	24
Opening a POI File.....	24
Creating a New POI File.....	25
Adding Individual POIs.....	25
Importing a Data File.....	27
<b>Chapter 11: Basic Operation of Vehicle Navigation .....</b>	<b>28</b>
Turning the Magellan RoadMate On Out of the Box.....	28
Suspend Power or “Sleep” Mode.....	28
Power Management.....	28
Resetting the Magellan RoadMate.....	28
Adjusting the Volume.....	28
Repeating the Last Command.....	28
Making Selections.....	28
Inputting Text Characters.....	29
Additional Characters (“&?/-” Button).....	29
Numerical Characters (“123” Button).....	29
What Is QuickSpell?.....	30
Multi-Word Indexing.....	31
<b>Chapter 12: Travelling .....</b>	<b>32</b>
Guidance Information Screens.....	32
Map Screen.....	33
Changing from 2D to 3D Map View.....	33
Changing the Map Zoom Levels.....	34
List of Directions Screen.....	34
TrueView 3D Screen.....	35
Choosing the Routing method.....	36
Changing the Routing Method.....	36
Cancelling a Planned Route.....	36
Detouring from the Planned Route.....	37
Excluding a Segment in the Planned Route.....	37
Displaying Information About Your Current Location.....	38
Saving Your Current Location to Your Address Book.....	38
Finding POIs Along Your Route.....	38
Finding a Detour Along Your Route.....	39
<b>Chapter 13: Selecting Destinations .....</b>	<b>41</b>
Destination Screen.....	41
Country Selection.....	41
Entering and Routing to Your Home Address.....	41
Selecting a Destination Using Select Address.....	42
Search By Town.....	43
Search by Postcode.....	43
Search By County.....	44
Previous Town.....	45
Selecting a Destination Using the Address Book.....	46
Previous Destinations.....	46
Saving a Previous Destination to the Address Book.....	46
Deleting A Previous Destination.....	48

# TABLE OF CONTENTS

Favourites .....	48
Editing a Favourite .....	49
Deleting A Favourite .....	49
List Addresses .....	50
Editing an Address .....	50
Deleting an Address .....	51
Create New Entry .....	51
Search by Town .....	51
Search by Postcode .....	52
Search by County .....	53
Previous Town .....	54
Trip Planner .....	55
New .....	55
Optimizing a Trip .....	56
Guide Me .....	57
Edit .....	57
Delete and Rename .....	58
Selecting a Point of Interest as a Destination .....	60
Spell Name .....	60
Nearest .....	60
List By Town .....	61
Select Category .....	61
Select Category .....	62
Nearest .....	62
List by Town .....	62
Spell Name .....	63
Cuisine Type .....	63
Custom POIs .....	63
Selecting a junction as a Destination .....	64
Search by Town .....	65
Search by Postcode .....	65
Search by County .....	66
Previous Town .....	67
<b>Chapter 14: Navigation Options .....</b>	<b>68</b>
Configuration .....	68
POI Selection .....	68
Custom POIs .....	68
Map Options .....	72
TrueView Options .....	73
Select Map Colour .....	73
Route Preferences .....	74
Detour Options .....	74
Voice Options .....	75
Menu Colours .....	76
Tone Options .....	76
GPS Options .....	76
GPS Status .....	76
Set GPS Position .....	77
Simulator Mode .....	77
Map Regions .....	78
Automatic Volume .....	79
Backup and Restore .....	79
Backup .....	79
Restore .....	80
Map Information .....	80
Trip Computer .....	80
Current Trip .....	81
Stopping or Starting the Trip Computer .....	81
Saving the Current Trip Report .....	82
Resetting the Trip Computer .....	82

# TABLE OF CONTENTS

Viewing a Saved Trip Report .....	82
Deleting a Trip Report .....	83
<b>Chapter 15: System Settings .....</b>	<b>84</b>
Brightness .....	84
Power Management .....	84
Password .....	84
Set Password.....	84
Remove Password .....	84
Language .....	85
<b>Chapter 16: System Status .....</b>	<b>86</b>
Product Information .....	86
User Storage .....	86
Diagnostics .....	86
Audio Test .....	86
Touchscreen Test.....	86
Keypad Test.....	86
Video Test.....	86
<b>Chapter 17: Help .....</b>	<b>87</b>
Quick Tips .....	87
Contact Us .....	87
<b>Appendix .....</b>	<b>88</b>
\POI Categories .....	88
Specifications .....	89
PC Requirements .....	90
GPS Status Screen .....	90
GPS STATUS Screen Structure-first page .....	90
Bad fix code .....	91
GPS STATUS Screen Structure - second page .....	92
Typical GPS STATUS Screen Display .....	93
Frequently Asked Questions .....	94

# Contact Information

## Technical Support

To contact Magellan Technical Support and Warranty service information in English, French, Italian, German, Spanish, Portuguese, Dutch, Norwegian, Finnish or Danish please dial:

FREE PHONE: 00800MAGELLAN\* (00800 62435526) from 9 AM to 6 PM GMT & GMT+1

or send an e-mail in English, French, Italian, German, Spanish, Portuguese, Dutch, Norwegian, Finnish or Danish to:

magellansupportemea@thalesnavigation.com

\*free of charge phone access available from Eire, UK, Portugal, Spain, France, Italy, Belgium, The Netherlands, Germany, Austria, Switzerland, Norway, Sweden, Denmark and Finland

For Magellan product telephone support in English, French or German from other European, Middle Eastern or African locations, please dial:

+33 2 28 09 38 00\*

or send an e-mail to:

magellansupportemea@thalesnavigation.com

\* international call charges vary according to operator.

For Magellan product telephone support in other European, Middle Eastern or African languages please contact your local distributor. Go to the dealer locator section of [www.magellanGPS.com](http://www.magellanGPS.com) to find your nearest distributor or send an email to:

magellansupportemea@thalesnavigation.com.

## Warranty Service

Before you decide to return your product to the shop where you purchased it from, please contact our Technical Support as explained in the previous paragraph.

## Customer service

To order accessories or obtain unlock codes, you can visit our web site at [www.magellanGPS.com](http://www.magellanGPS.com) or contact our Technical Support.

## Registration

Please ensure that you register your Magellan RoadMate at [www.magellanGPS.com](http://www.magellanGPS.com). By registering you will be informed of the latest product updates. Registration does not qualify as proof of purchase for warranty service.



# Chapter 1: Information

## 1.1 About Satellite Navigation

Global satellite navigation is an exciting technology, providing enhanced productivity and accuracy in a vast number of industries. It adds a new level of enjoyment and safety to a wide range of navigation, sports and recreational activities.

A Global Navigation Satellite System (GNSS) is a network of satellites that transmit high-frequency radio signals containing time and distance data that can be picked up by a receiver, allowing users to pinpoint their precise locations anywhere around the globe.

There are two Global Navigation Satellite Systems in operation: the U.S. Global Positioning System (GPS) and the Russian GLObal NAVigation Satellite System (GLONASS). These systems are constantly being upgraded to meet higher standards of reliability. A third GNSS, which is named GALILEO after the Italian astronomer of the early 1600s, is being developed in Europe specifically to provide a higher standard of integrity and reliability, required to ensure the safety of lives during transport by air, land and sea, without the use of additional augmentation systems.

While the GPS and GLONASS satellite networks are being developed to achieve maximum performance, Satellite-Based Augmentation Systems (SBAS) have been established to provide improved accuracy. SBAS provides differential signal corrections for GPS and GLONASS transmissions with the use of ground stations and geostationary satellites in specific regions. This is GNSS-1, the first phase in establishing the required integrity for high-precision satellite navigation.

GNSS-2 requires the launching of new satellites into orbit and a complete upgrade of the existing satellite systems. This second phase is already well underway. GALILEO, which is scheduled to begin service in 2008, is being developed to meet the standards of GNSS-2 for rapid and reliable, certified precision positioning.

## 1.2 How Satellite Navigation Works

Global navigation satellites continuously transmit time and distance information as they orbit Earth in a precise formation. Navigation satellite receivers use this information to calculate an exact location through triangulation. Every point on Earth is identified by two sets of numbers called coordinates. These coordinates represent the exact point where a horizontal line, known as latitude, crosses a vertical line, known as longitude. The receiver locks on to at least three satellites and uses the information received to determine the coordinates of the receiving device.

By comparing the time when signals were transmitted from the satellites and the time when they were recorded, the receiver calculates how far away each satellite is. The distance of the receiver from three or more satellites reveals its position on the surface of the planet. With these distance measurements, the receiver might also calculate speed, bearing, trip time, distance to destination, altitude and more.

The satellite-navigation device may display its position as longitude/latitude, Universal Transverse Mercator (UTM), Military Grid (MG) or simply as a point on an electronic map. Many Thales Navigation receivers provide comprehensive mapping data, making satellite navigation an easy tool to enhance your recreational and industrial activities.

### 1.2.1 Line of Sight

Satellite-navigation receivers operate by line of sight with global-positioning satellites. This means that at least three satellites must be in “view” of a receiver in order to calculate longitude and latitude. A fourth satellite must also be within line of sight to calculate altitude. On average, eight satellites are continuously within line of sight of every position on Earth; the more satellites in view, the more accurate the positioning.

Although radio signals from navigation satellites will pass through clouds, glass, plastic and other lightweight materials, satellite-navigation receivers will not work underground or in other enclosed spaces.

# Chapter 1: Information

## 1.3 A Word on the Safe Usage of GPS Maps

Just like paper maps, maps on GPS devices vary greatly in terms of information included and visual presentation. Whether we are talking about topographical maps, roadmaps or marine charts, each map and the data it presents is designed for a specific purpose. For example, marine charts will often present only a minimal representation of roadways and are not a substitute for street maps. Topographic maps usually provide minimal detail about bodies of water and do not contain marine navigational markers.

Maps also vary widely in scale: the smaller the scale, the more detailed the map. Therefore, when using GPS maps (just as with paper maps) it is important to consider what type of map you are using in your explorations and to use common sense.

### 1.3.1 From Source to Destination

Thales Navigation, maker of Magellan GPS products, is not a cartography company. We do not create the maps that are used on our GPS devices. We seek to acquire map data from the best public and private sources available at the time of publication. Thales Navigation licenses\* topographical maps, roadmaps, marine charts and points of interest (POI) data from commercial and governmental cartographic sources that provide raw map data. Thales Navigation processes and compresses the raw data into a format that makes it presentable and manageable so that it works on our GPS devices. And to ensure that our map data is as robust as possible, data from multiple sources are often combined to provide a better user experience for our customers. This processing does not alter the landforms, coordinates or other spatial data that comes in the raw data. The accuracy of the maps is fundamentally dependent on the source data used to create them. Map data changes frequently due to both natural and man-made causes. As a result, governmental and commercial cartography companies must continuously review, correct and improve upon their map data. We release new versions of our maps on a regular basis to reflect these changes.

After processing the data, we test the compatibility of the map with our GPS devices to ensure that the products we release work properly on our GPS devices. We also beta-test our products to obtain customer feedback prior to release.

## 1.4 Placement of Your GPS Receiver for Optimal Satellite Reception

Firstly, before considering signal reception, it is important to understand that your GPS receiver is a sensitive piece of equipment. You should never place it in an area of your vehicle where it may be struck by other items or where vibration may cause it to strike other items or parts of the vehicle. The windscreen mount included in the box allows you to place the receiver in such a way that the antenna can receive the satellite signal through the windscreen without being obstructed by other parts of the vehicle. However, tinted windows or other reflective coatings may interfere with reception. In this case, you may need to attach an external antenna (optional). An external antenna provides faster satellite fix times and greater signal strength. Because it is mounted outside the vehicle, it is not affected by reflective coatings on windows and has an unobstructed line of sight to the satellites. Other mounting solutions are available but may require an external antenna.

External conditions also affect GPS signal reception. Although weather conditions do not affect the signal, tall buildings and trees, driving through canyons, wooded areas or tunnels and sitting in a garage or covered car park will affect the GPS signal. The GPS receiver constantly monitors and updates the GPS signal status and will reacquire the signal once it is clear of any obstructions.

## 1.5 Signal Acquisition Time

The first time you use your Magellan RoadMate, or if you travel over 500 miles with the unit off, there may be a delay in receiving the initial satellite fix; depending on your position and the position of the satellites, this could take 15 minutes or more. Under normal usage the satellite fix will be received much faster, but it may still take several minutes. It is important to have your antenna rotated upward and an unobstructed view of the sky to receive the best possible satellite signal.

## 1.6 GPS Maps and Your Safety

Remember, your GPS device is an aid to navigation. It must be used with common sense and it is important that users interpret GPS map data with a critical eye. Landscapes and roads change or may be impassable, trees and tall buildings can

# Chapter 1: Information

obscure GPS signals and your GPS device may not always reflect the complete picture. When using GPS, you must combine the information provided by your GPS map with your relevant local knowledge, road signage, buoys, depth soundings and changing local conditions to generate a complete understanding of your situation.

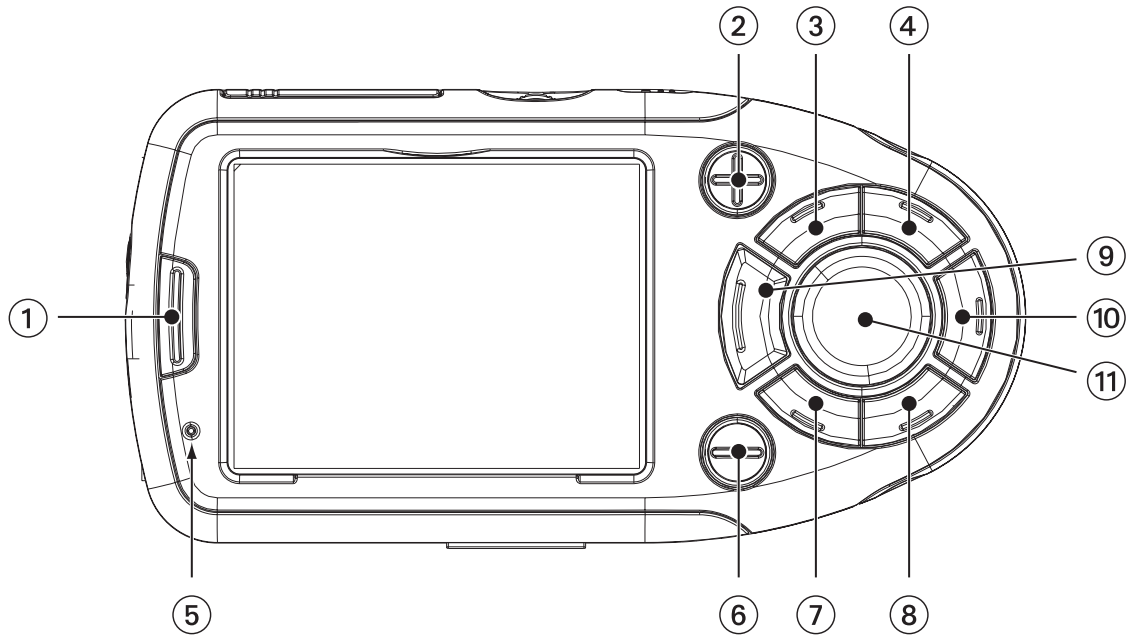
It is your responsibility to ensure compliance with all traffic regulations, including pedestrian observance of crossings, and to use good judgment whilst operating the Magellan GPS receiver. Safety must be your primary concern. The Magellan GPS receiver must not be used while engaged in any activity requiring the user's full attention to the environment. For instance, the Magellan RoadMate GPS receiver should be operated only by vehicle passengers or by the driver when the vehicle has come to a complete stop. The driver must not attempt to view the display while driving. Disregard any unsafe, hazardous or illegal routing suggestions.

Magellan maps do not include, analyse, process, consider or reflect any of the following: legal restrictions (such as weight, height, width, load and speed restrictions); road slope or grade; bridge height, width, weight or other limits; population density; Area quality or safety; availability or proximity of law enforcement, emergency rescue, medical or other assistance; construction work zones or hazards; road, pavement or waterway closures or conditions; weather conditions; pavement characteristics or conditions; special events; traffic congestion; time of day.

\*Thales Navigation licenses map data from governmental sources such as, but not limited to, U.S. Geological Survey (USGS), the National Oceanic and Atmospheric Administration (NOAA-NOS) and the Canadian Hydrographic Service (CHS). Thales Navigation also licenses map data from commercial cartography companies such as Navigation Technologies, Navionics, DMTI and C-Map.

# Chapter 2: Magellan RoadMate

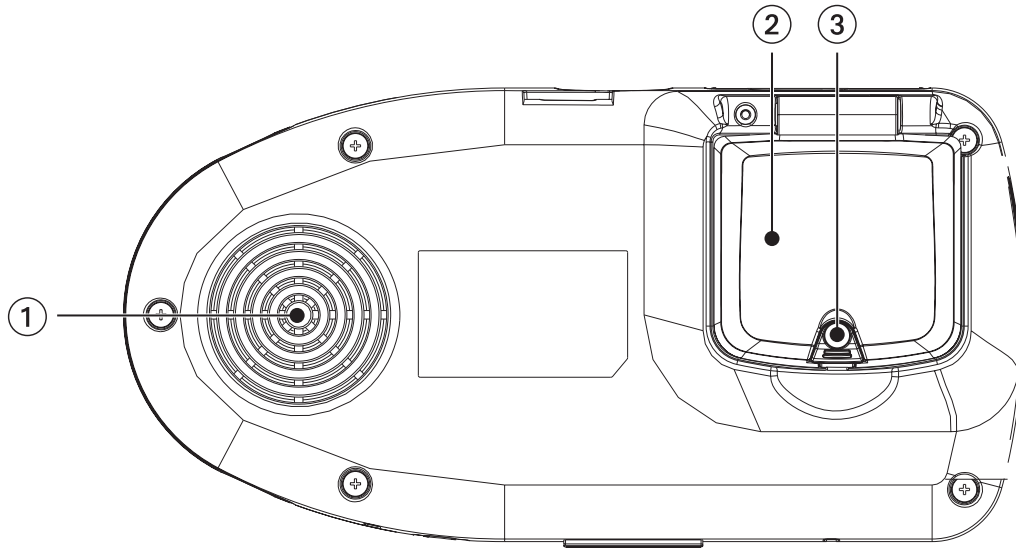
## 2.1 Front View



1	Suspend Button	Press to enable "sleep" mode.
2	Zoom In Button	While viewing the map, press to zoom in on the centre of the display. The Zoom In Button can also be used with long lists to scroll one page at a time.
3	Menu Button	Press to view Main Menu.
4	Enter Button	Press to confirm highlighted selections.
5	Power Indicator	Light turns green when battery is fully charged and orange while battery is charging.
6	Zoom Out Button	While viewing the map, press to zoom out from the centre of the display. The Zoom Out Button can also be used with long lists to scroll one page at a time.
7	Locate Button	Press to display current location details and save it to your address book.
8	Escape Button	Press to stop the current function.
9	Mute Speaker	Press to disable sound from the speaker and the headphone jack.
10	View Button	Press to view map display, segment list or TrueView 3D display.
11	Navigation Key	Use to scroll through lists one item at a time, menus or to pan the Map screen.

# Chapter 2: Magellan RoadMate

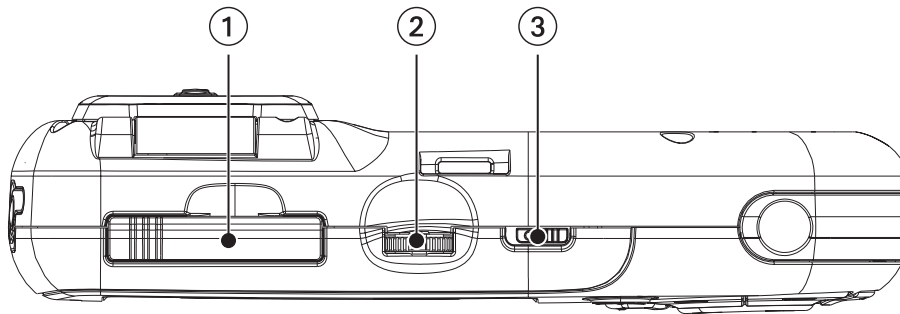
## 2.2 Rear View



1	Speaker	Used for audible segmenting instructions and music playback.
2	Antenna	Rotate up when in use to receive signals from the GPS satellite network. See Chapter 4 "Antenna Position" on page 13.
3	External Antenna Connection	Plug in an external antenna (optional) for better signal acquisition.

# Chapter 2: Magellan RoadMate

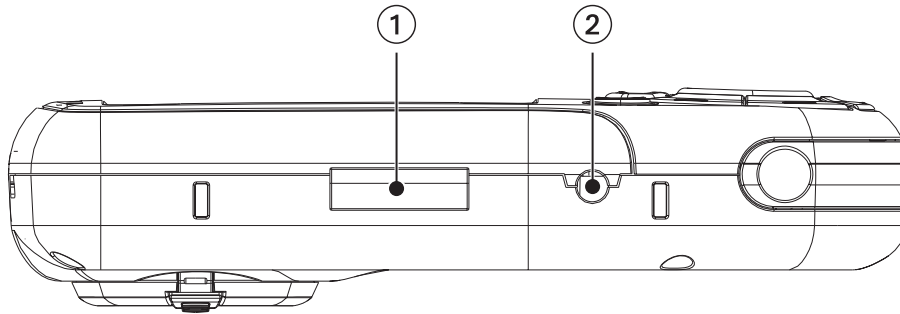
## 2.3 Top View



1	Storage Card slot	Used to backup and restore personal navigation data and to transfer image files.
2	Volume Control	Rotate left or right to increase or decrease the volume. Press to repeat last voice prompt.
3	Reset Switch	Slide to position "1" for power, position "0" to turn power off.

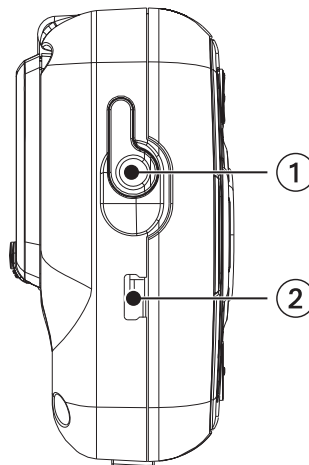
# Chapter 2: Magellan RoadMate

## 2.4 Bottom View



1	16-pin Connection	Used for future expansion.
2	External Power Connection	Plug in the AC Adapter or the 12-volt vehicle power adapter.

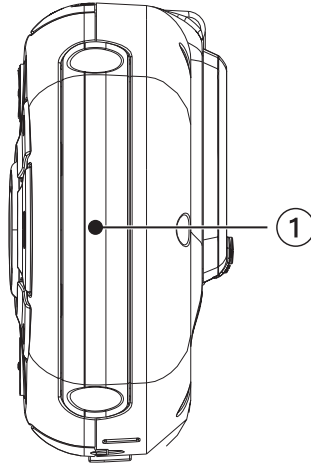
## 2.5 Left-hand side View



1	Stereo Headphone Connection	Used to connect the stereo headphones.
2	USB Connection	Plug the Magellan RoadMate into your PC to upload music, photos and custom POIs.

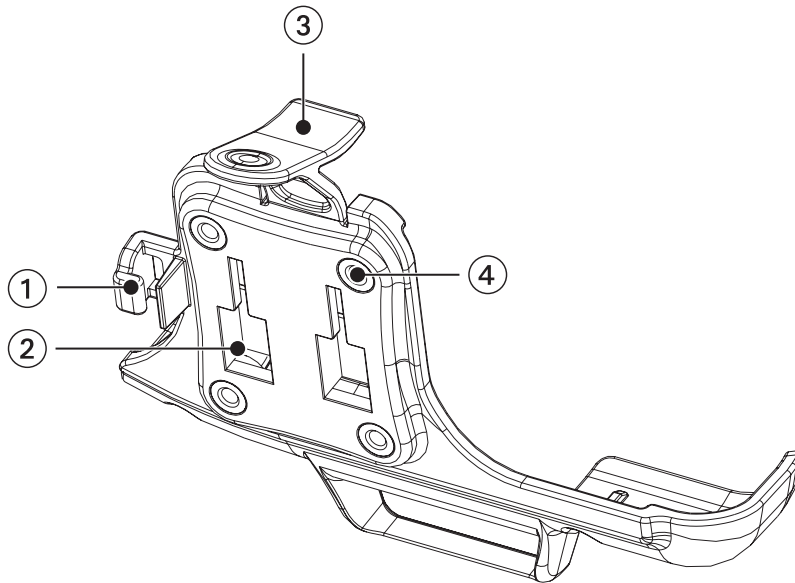
# Chapter 2: Magellan RoadMate

## 2.6 Right-hand side View



1	Battery Compartment Cover	Rechargeable battery.
---	---------------------------	-----------------------

## 2.7 Cradle



1	Wire Catcher	Used to secure the power cable.
2	Windscreen Mount connection	Insert the notches of the windscreen mount here.
3	Cradle Release	Press to release Magellan RoadMate from cradle.
4	Mount Screw Holes	Attach another mounting device that requires an adapter plate.



# Chapter 2: Magellan RoadMate

## 2.8 Using Removable Storage Cards

The Magellan RoadMate is equipped with a storage card slot at the top of the unit which accepts Secure Digital (SD) cards and Multimedia Cards (MMC). These cards are mainly used to back up and restore navigation data and to transfer image files to and from the hard disk. The storage card slot on your Magellan RoadMate uses what is called a “push-push” method of locking and releasing. In other words, when you insert the card you must push it to lock it in and to release it you must push it also. Storage cards come in a variety of sizes and manufacturers; please visit our web site at [www.magellangps.com](http://www.magellangps.com) for a list of compatible storage cards.

### 2.8.1 To Insert the Storage Card:

Peel back the rubber gasket to expose the storage card slot. Do not completely remove the rubber gasket.

The storage card can only be inserted in one direction. Do not force the card into the slot.

Insert the storage card into the slot with the metal contacts going in first and the bevelled edge to the left.

Push the storage card until you hear a click.

Close the rubber gasket.

### 2.8.2 To remove the Storage card:

Peel back the rubber gasket to expose the storage card slot. Do not completely remove the rubber gasket.

Push the storage card until you hear a click. Do not attempt to pull the card out of the slot

Remove the storage card from the slot.

Close the rubber gasket.

# Chapter 2: Magellan RoadMate

## 2.9 Battery Removal and Installation

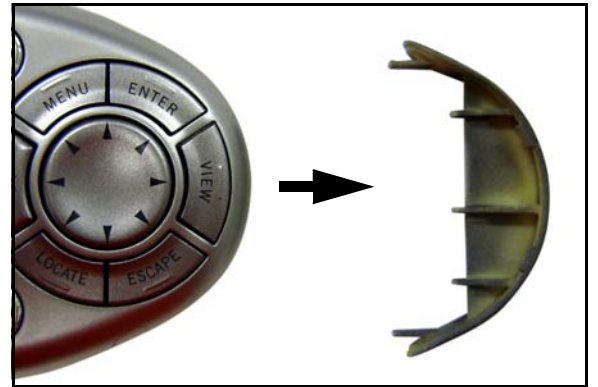
The battery in the Magellan RoadMate 800 is a rechargeable lithium-ion battery which you should not need to replace. If the battery fails to charge or is defective, please follow these procedures to remove the battery and install the replacement.

### 2.9.1 Removing the Battery

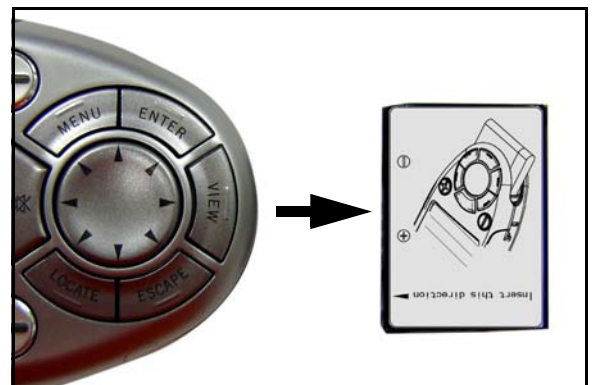
Using a small Phillips screwdriver, remove the screw that holds the battery compartment cover in place.



Remove the battery compartment cover.



Remove the battery.



### 2.9.2 Installing the Battery

Insert the battery label side down with the flat, pin connector side in the unit. Replace the battery compartment cover. Reinstall the screw.

# Chapter 3: Vehicle Installation

Take care when mounting the Magellan RoadMate in your vehicle, whether you are using the windscreen mount or other mount, that it does not obstruct the driver's view of the road. Make sure that the fitting of the Magellan RoadMate and cable does not interfere with the operation of vehicle safety devices, such as air bags. You assume the risks associated with damage to your vehicle or vehicle's occupants as a result of how you choose to mount the Magellan RoadMate.

## 3.1 Installing the Windscreen Mount

Attach the cradle to the back of the unit. Insert the bottom of the unit first, then snap the cradle clip at the top into place.



Slide the windscreen mount onto the back of the cradle.



Press the windscreen mount to the glass and slide the locking lever towards the glass.



Plug the power cable into the unit as shown.



## Chapter 3: Vehicle Installation

Then, route the cable along the back of the cradle and insert it into the wire catcher.



Plug the power adapter into your vehicle's cigarette lighter or 12-volt receptacle.



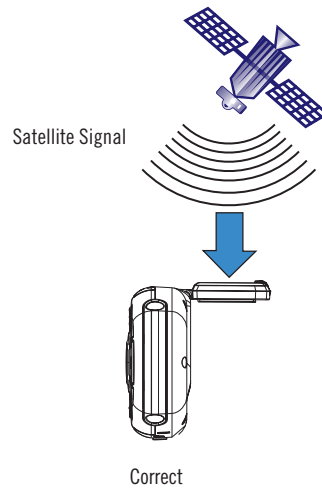
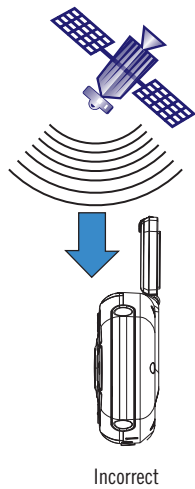
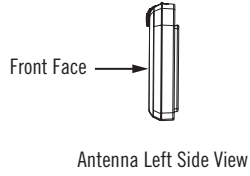
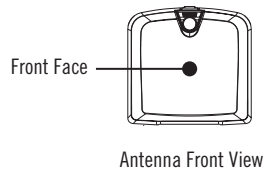
Rotate the antenna upward (see page 13 for correct antenna position).



Installation is complete, and you are ready to turn the Magellan RoadMate on and go.

# Chapter 4: Antenna Position

The antenna on the Magellan RoadMate 800 is designed in such a way as to receive the satellite signal at the front face of the antenna. It is important to angle the antenna so that the front face is mostly towards the sky. Ideally in most vehicles, the antenna should be rotated to approximately 90° from the unit to receive the best possible satellite signal.



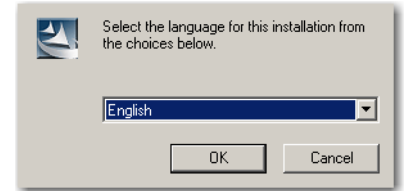
# Chapter 5: Magellan RoadMate Tools Installation

## 5.1 Installing the Software

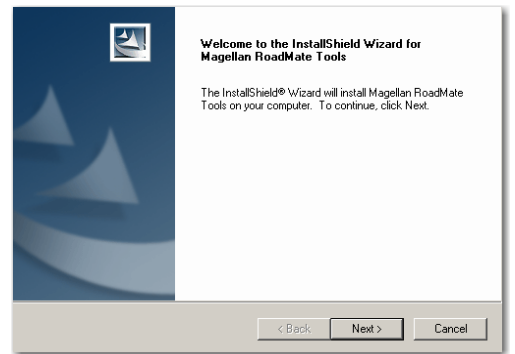
Insert the Magellan RoadMate Tools PC Application CD into your PC's CD drive.

The setup application will begin automatically. If not, browse your computer's CD drive and double-click on the setup.exe file.

Select a default language for the Application.



The Welcome screen will appear to begin the installation process.

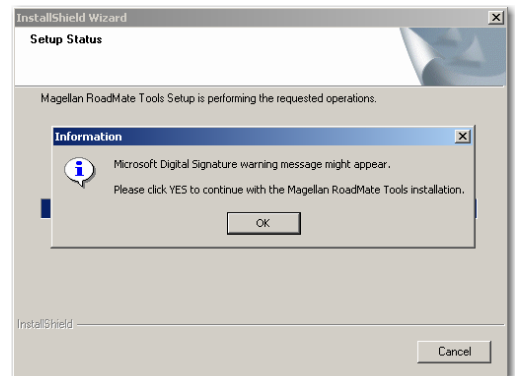


Choose a destination for the application. Select **Next** to use the default location, or select **Browse** to choose a custom destination.

Next, choose a Program Folder in which to place the application icons.

The Magellan RoadMate Tools software will be installed. Once installation is complete a dialog box pertaining to Microsoft Digital Signatures may appear, select **OK**

When it has finished, you can have the installer launch the application automatically. or deselect to exit without launching the application. Select **Finish**.



## 5.2 Connecting Your Magellan RoadMate

Connect the small end of the USB cable to the USB port on the unit and the large end to an available USB port on your personal computer. See "Left-hand side View" on page 7.

Connect the small end of the External Power cable to the power port on the unit and plug the other end of the cable into a standard 220V AC wall outlet. See "Bottom View" on page 7.

# Chapter 6: Magellan RoadMate Music Manager

The Magellan RoadMate Music Manager enables you to transfer song files in MP3 or WMA format from your computer to your Magellan RoadMate or from your Magellan RoadMate to your computer. The Magellan RoadMate has 5 GB of hard disk space available for storage of music files, image files and custom POI files.

Using the USB cable provided with your Magellan RoadMate, insert the large end of the USB cable into an available USB port on your computer.

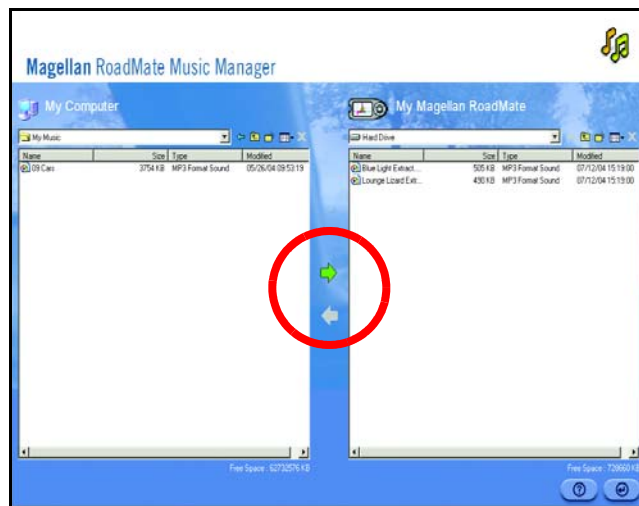
Turn on your Magellan RoadMate by sliding the Reset switch to position “1” (See “Top View” on page 6) or by pressing the Suspend button if the unit is in “sleep” mode (See “Front View” on page 4). When the Warning screen appears, insert the small end of the USB cable into the USB port on your Magellan RoadMate. See “Left-hand side View” on page 7.

Launch the Magellan RoadMate Tools application. From the Magellan RoadMate Tools screen, click on **Music**.



The left-hand side of the window shows the contents of your computer and the right-hand side of the window shows the contents of the Magellan RoadMate.

Locate the song files that you would like to load. When you have selected a file, the Copy To Unit arrow will turn green. Click on the transfer arrow to copy the file to your unit.



In the same way, if you have loaded song files onto your Magellan RoadMate from another computer, you can copy the files from your unit to your computer.

Locate the song files that you would like to load. When you have selected a file, the Copy To PC arrow will turn green. Click on the transfer arrow to copy the file to your unit.

When you have finished copying files, remove the USB cable from the unit.

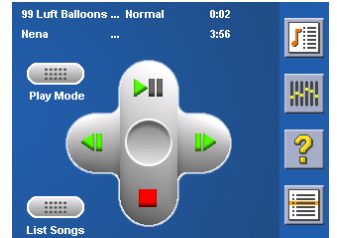
# Chapter 7: Music Player

The Magellan RoadMate Music Player enables you to play, in MP3 or WMA format, music files which are stored on the hard disk of your Magellan RoadMate or on an optional storage card. If you have not already done so, you must install the Magellan RoadMate Tools application (page 14) and transfer files onto your unit using the Magellan RoadMate Music Manager (page 15).

Press the **MENU** key on the unit (see page 4) and select the Music Player



The Music Player control pad will appear.

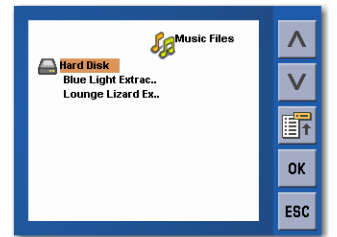


## 7.1 Single Song Play

Select **Browse Music**



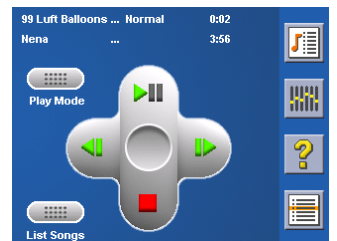
Use the Navigation key or the Down arrow  to select the song file you would like to play and press **OK**.



The song will begin playing automatically.

At the top of the screen you will see the name of the song, the artist (if available), the selected play mode, the elapsed time and the song duration.

Press the **Play/Pause** button to suspend song play. To resume song play, press the **Play/Pause** button again.



Press the **Stop** button to stop song play. Once a song has been stopped, press the **Play/Pause** button to start the song from the beginning.

## 7.2 Multiple Song Play

Multiple song play enables you to create a “playlist”. A playlist consists of one or more songs in a group that can be played continuously.

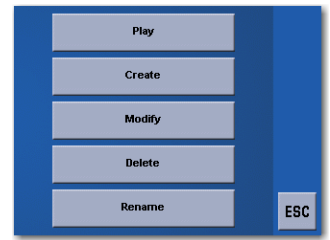
Select **Playlist**





# Chapter 7: Music Player

The Playlist menu will appear. To exit from the playlist menu, select **ESC**.



## 7.2.1 Play

To hear a previously created playlist, select **Play**.

Use the Up or Down arrow to select the required playlist. Select **OK**.

The songs will begin playing automatically in order.

## 7.2.2 Create

To make a new playlist, select **Create**.

Use the backspace key (<-) to erase the default name and the keypad to enter a new name for your playlist. When you have finished, select **OK**.

The next screen to appear will show the song files which are stored on the hard drive on the left-hand side and the playlist on the right-hand side.

Use the arrow buttons on the left-hand side of the screen to highlight the Music folder, then select **List Files**.

Use the arrow buttons to highlight the song files you would like to add to the playlist. Select **Add to Playlist** (right arrow) to add the highlighted song to the playlist.

Continue adding files to the playlist. When you have finished, select **OK**.

## 7.2.3 Modify

Modify enables you to add or remove songs from the selected playlist. Select **Modify**.

To remove a song from the playlist, use the arrow keys on the right-hand side of the screen to highlight the required song and then select **Remove From Playlist** (left arrow).

Use the arrow buttons on the left-hand side of the screen to highlight the song files you would like to add to the playlist. Select **Add to Playlist** (right arrow) to add the highlighted song to the playlist.

Continue adding files to the playlist. When you have finished, select **OK**.

## 7.2.4 Delete

To remove a playlist, select **Delete**.

Select the playlist you would like to delete and select **OK**.

A dialog box will appear asking to confirm your selection. Select **Yes** to delete the playlist.

# Chapter 7: Music Player

## 7.2.5 Rename

If you want to change the name of a playlist, select **Rename**.

Select the playlist that you would like to rename, then select **OK**.

Use the backspace key (<-) to erase the name and the keypad to enter a new name for your playlist. When you have finished, select **OK**.

## 7.3 Play Mode

While in single song play, select **Play Mode** for song play options.

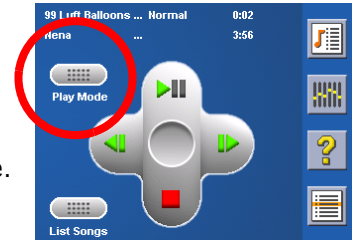
Repeat All - Repeats all songs in the current playlist, starting at the beginning of the sequence. This function works only if there are two or more songs in the playlist.

Repeat - repeats the song that is currently playing.

Preview - Plays the first five seconds of each song in the current playlist.

Normal - Plays all songs in the current playlist in sequence.

Random - Plays the songs in the current playlist in random order.




## 7.4 List Songs


Select **List Songs** to view the current playlist.



## 7.5 Equalizer


The Equalizer provides advanced sound options so that you can customise the quality of the playback. The equalizer will only be available for MP3 format sound files. Select an equalizer preset from the following preconfigured options: Default (flat), Jazz, Classical, Rock, Techno, Dance Hall, Live, Full Bass, Full Treble and Full Bass & Treble. However, you cannot set the equalizer manually .

Select the **Equalizer**  .

Select the equalizer preset by pressing the button at the top of the screen  .

When you are satisfied with your selection, select **OK**. To exit without setting the equalizer, select **ESC**.

## 7.6 Help

Select **Help**  for descriptions of the Music Player buttons.

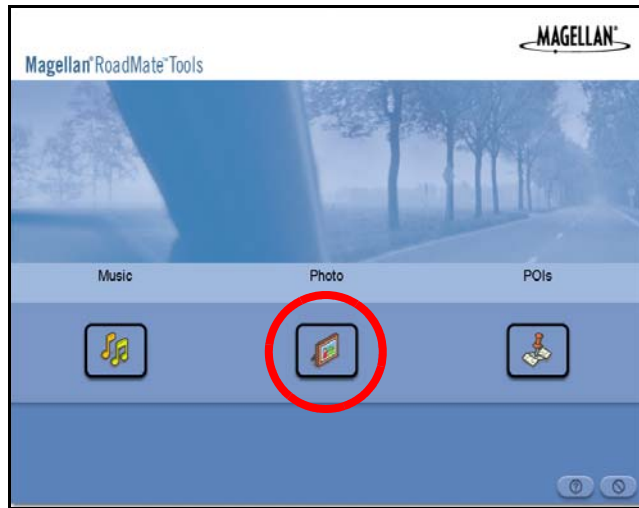
# Chapter 8: Magellan RoadMate Photo Manager

The Magellan RoadMate Photo Manager enables you to transfer image files in either JPG or BMP format from your computer to your Magellan RoadMate or from your Magellan RoadMate to your computer. The Magellan RoadMate has 5 GB of hard disk space available for storage of music files, image files and custom POI files.

Using the USB cable provided with your Magellan RoadMate, insert the large end of the USB cable into an available USB port on your computer.

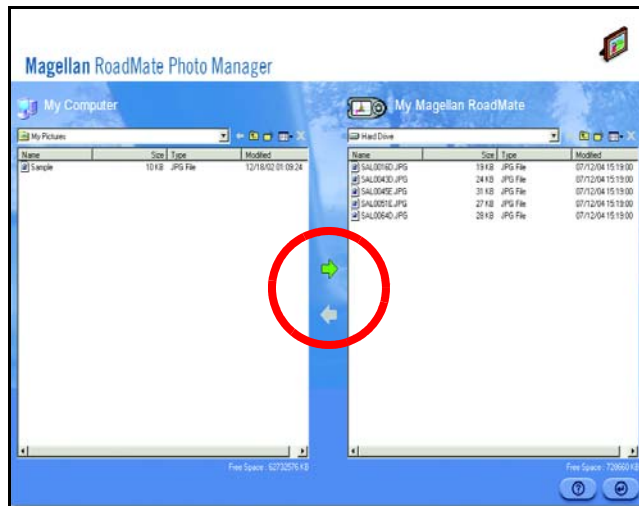
Turn on your Magellan RoadMate by sliding the Reset switch to position “1” (See “Top View” on page 6) or by pressing the Suspend button if the unit is in “sleep” mode (See “Front View” on page 4). When the Warning screen appears, insert the small end of the USB cable into the USB port on your Magellan RoadMate. See “Left-hand side View” on page 7

Launch the Magellan RoadMate Tools application. From the Magellan RoadMate Tools screen, click on **Photo**.



The left-hand side of the window shows the contents of your computer and the right-hand side of the window shows the contents of the Magellan RoadMate.

Locate the image files that you would like to load. When you have selected a file, the Copy To Unit arrow will turn green. Click on the transfer arrow to copy the file to your unit.



In the same way, if you have loaded image files onto your Magellan RoadMate from another computer, you can copy the files from your unit to your computer.

Locate the image files that you would like to load. When you have selected a file, the Copy To PC arrow will turn green. Click on the transfer arrow to copy the file to your unit.

When you have finished copying files, remove the USB cable from the unit.

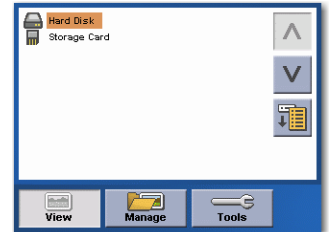
# Chapter 9: Photo Viewer

The Magellan RoadMate Photo Viewer enables you to view, in JPG or BMP format, image files which are stored on the hard disk of your Magellan RoadMate or on an optional storage card. In order to transfer files from your PC to the Magellan RoadMate, you must install the Magellan RoadMate Tools application (page 14) and copy the files onto your unit using the Magellan RoadMate Photo Manager (page 15).

Press the **MENU** key on the unit (see page 4). Select the **Photo Viewer**



The Photo Viewer screen will appear. The Photo viewer will show the Hard Disk and the storage card (if inserted).

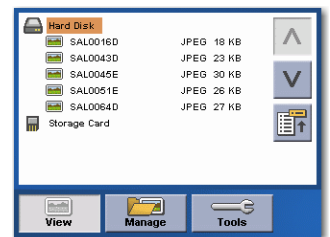


## 9.1 View Single Photo

The next screen to appear will show the file structure of the hard disk. Select **List Files**



Use the Navigation key or the Down arrow  to highlight the photo that you would like to view and select **View**.



If you double-click (tap twice on the screen) on the image while you are viewing it, it will be displayed in full screen mode. You can then cycle through the images by pressing left or right on the Navigation key.

### 9.1.1 Previous Image (left arrow)



Press the left arrow button to view the previous image in the folder. This button is greyed out (not functional) when you view the first image in the folder.

### 9.1.2 Zoom



Press the Zoom button to reduce or enlarge the current photo. The top of the zoom menu shows the current zoom level. Select another zoom level from the list of presets. Select Best Fit to adjust the zoom to fit within the display boundaries, select Actual Size to display the image at 100%, select 25% to 150% to reduce or enlarge the image to the preset level.

# Chapter 9: Photo Viewer

## 9.1.3 Slideshow



Press the Slideshow button to automatically cycle through all the photos in the Pictures folder.

## 9.1.4 Pan



If you enlarge an image beyond the screen boundaries, press the Pan button to enable image scrolling. While enabled, you can drag the image in any direction to view other areas of the image. Press the Pan button again to disable Pan mode.

## 9.1.5 Rotate Image



Press the Rotate Image button to rotate the image 90° anticlockwise, 90° clockwise or 180°.

## 9.1.6 Next Image (right arrow)



Press the right arrow button to view the next image in the folder. This button will be greyed out (not functional) when you are viewing the last image in the folder.

## 9.1.7 ESC



Press **ESC** to return to the folder list.

## 9.2 Manage Photos

### 9.2.1 List View

Press List view to show the files in a hierarchical list view.

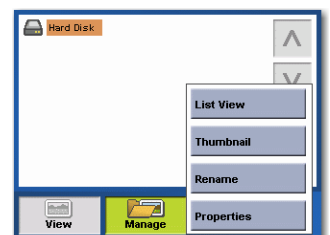
### 9.2.2 Thumbnail

Press Thumbnail to show the files as thumbnails.

### 9.2.3 Rename

To change the name of the selected file or folder, press Rename.

Use the backspace key (<-) to erase the name and use the keypad to enter a new name for your file. When you have finished, select OK.



# Chapter 9: Photo Viewer

## 9.2.4 Properties

To view information on the selected file or folder, press **Properties**. A thumbnail of the image will be displayed along with the width and height in pixels, the size and the format (image type). When viewing the properties for folders, width, height and format are not shown. Size shown is the combined size of all images in the selected folder.

When you have finished viewing the properties, select **OK**.

## 9.3 Tools

### 9.3.1 Preferences

**General** – The General preferences, you can set the default file view to either thumbnail or file list view.

**Slideshow** – The slideshow preferences enable you to set the view properties, the sequence of photos, the transition between photos and the length of time between photos.

**Background** – The background preferences enable you to set the colour of the background behind the photo being viewed.

### 9.3.2 Transfer Photos

Select Transfer Photos to copy files or folders between your hard disk and an optional storage card.

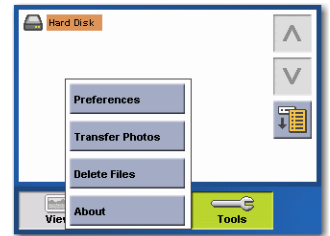
### 9.3.3 Delete Files

Use the arrow keys to select the file or folder that you would like to delete. Press the **Delete** button (recycle bin).

A dialog box will appear prompting you to confirm your selection. Select **Yes** to delete the file.

### 9.3.4 About

This option will display the current version of the Photo Viewer software.



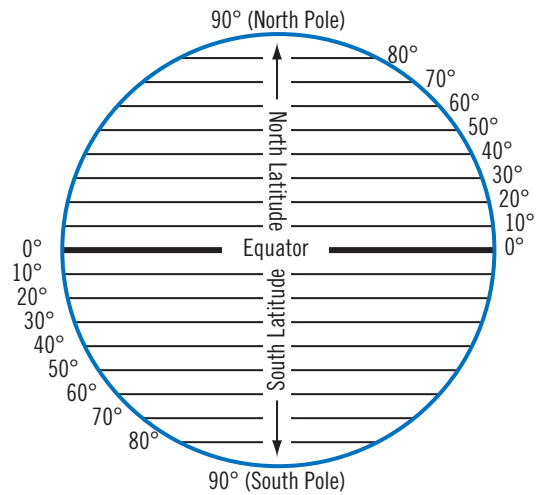
# Chapter 10: Magellan RoadMate POI Manager

The Magellan RoadMate POI Manager enables you to transfer custom points of interest files from your computer to your Magellan RoadMate.

Before we add any custom POIs to the unit, you should understand how the POI Manager plots POIs.

## 10.1 Latitude

Latitude can be expressed by dividing the Earth into horizontal segments totalling 180 degrees. Starting at the Equator (or zero degrees Latitude), lines (or Parallels) are drawn in 10-degree increments 90 degrees to the north and 90 degrees to the south. If your location is below the Equator, you are at a Southerly Latitude.

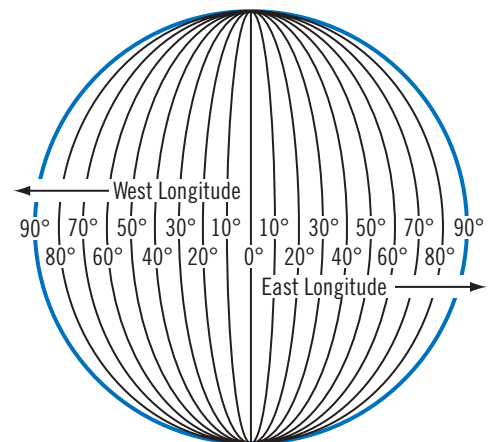


## 10.2 Longitude

Conversely, longitude lines can be expressed by dividing the Earth into vertical segments totalling 360 degrees. Starting at the Prime Meridian (which is The Royal Observatory in Greenwich, England) or zero degrees Longitude, lines are drawn in 10-degree increments 180 degrees to the West and 180 degrees to the East. If your location is in the western hemisphere, you are at a Westerly Longitude.

Additionally, to narrow down your location further, each 10-degree segment is divided into 60 smaller segments called minutes and, still further, each minute is divided into 60 segments called seconds.

To express this in coordinates, the town of Los Angeles is located at 34° (degrees) 03' (minutes) and 08 (seconds) North of the Equator and 118° (degrees) 14' (minutes) and 42 (seconds) West of the Prime Meridian.



# Chapter 10: Magellan RoadMate POI Manager

## 10.3 Altitude

Each location can also have an Altitude. Altitude is expressed by how far the point is above or below sea level. For example, Los Angeles in California is about 300 feet above sea level. Death Valley, California is about 270 feet below sea level.

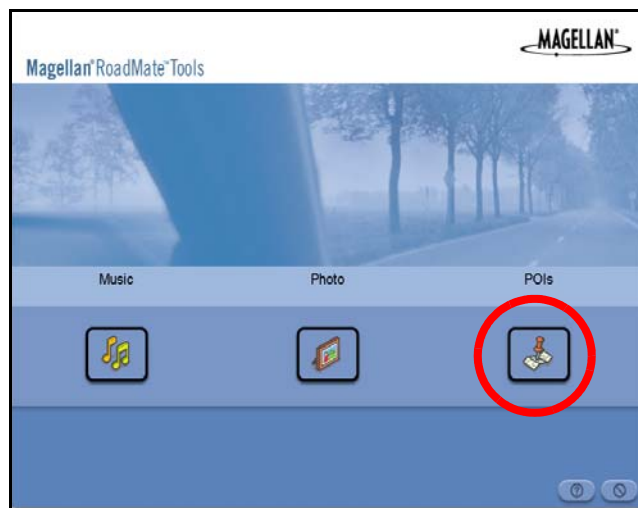
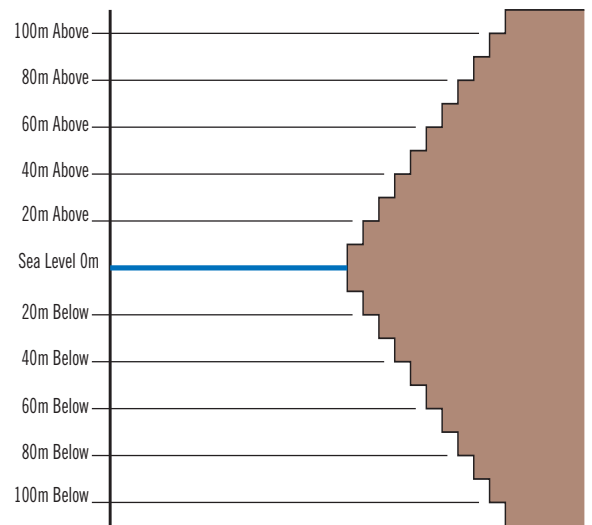
The POI Manager has a single interface for loading, adding and deleting custom POIs from your Magellan RoadMate.

Using the USB cable provided with your Magellan RoadMate, insert the large end of the USB cable into an available USB port on your computer.

Turn on your Magellan RoadMate by sliding the Reset switch to position “1” (See “Top View” on page 6.) or by pressing the Suspend button if the unit is in “sleep” mode (See “Front View” on page 4.).

When the Warning screen appears, insert the small end of the USB cable into the USB port on your Magellan RoadMate. See “Left-hand side View” on page 7.

Launch the Magellan RoadMate Tools application. From the Magellan RoadMate Tools screen, click on **POI**.



The left-hand side of the window shows the contents of your computer and the right-hand side of the window shows the contents of the Magellan RoadMate.

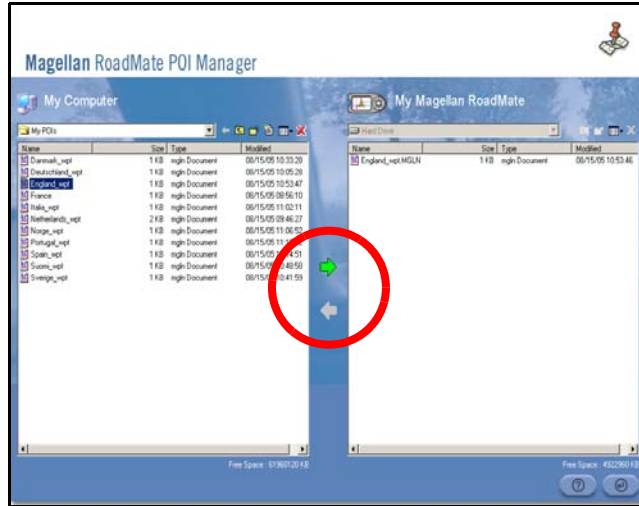
## 10.4 Opening a POI File

When you start the POI Manager the contents of your “My POIs” folder will be displayed. This is the default location for storing custom POI files.



# Chapter 10: Magellan RoadMate POI Manager

Locate the POI files that you would like to load. When you have selected a file, the Copy To Unit arrow will turn green. Click on the arrow to copy the file to your unit.



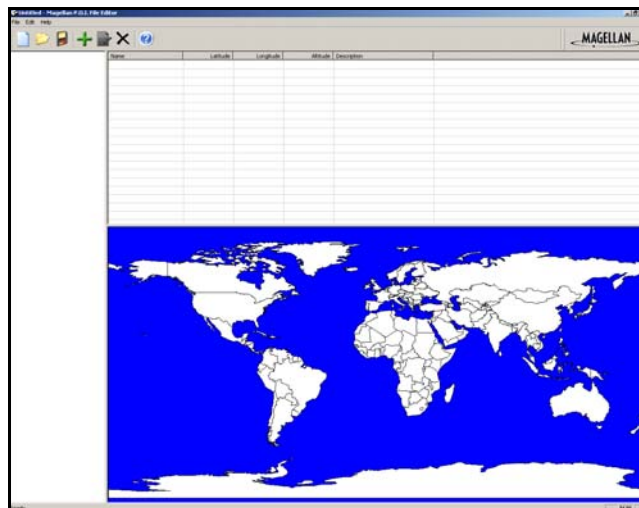
When you have finished copying files, remove the USB cable from the unit.


## 10.5 Creating a New POI File

There are two ways to create a POI file. You can either add POIs individually or you can import a character-delimited file containing the information needed to plot the POIs. To plot a POI, each item must have a name, longitude and latitude. Longitude and latitude must be in the decimal format.

## 10.6 Adding Individual POIs

Click on the **New POI File** Button to launch the POI Editor.



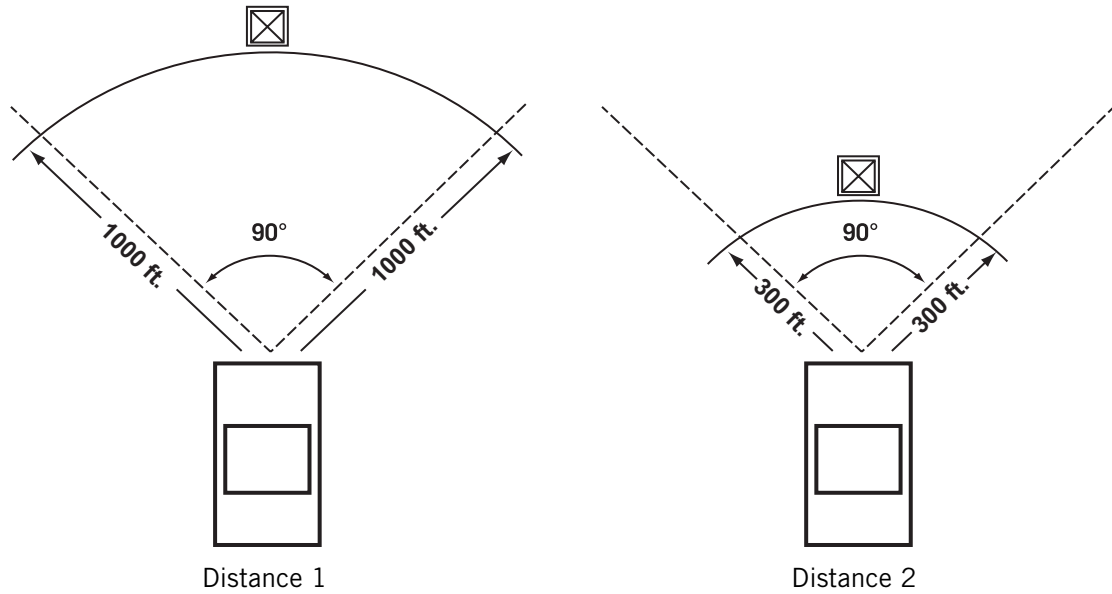
Click on the **Add** button  .

Enter the Name, the Latitude and the Longitude. The Altitude and Description fields are optional.

Select the Category field and select **New**. A dialog box will appear to create a new POI category. Enter the Name and assign an Image (icon) for the POI. The Description field is optional.

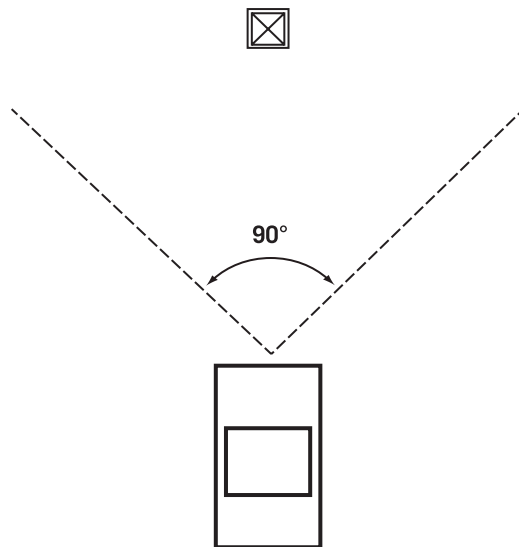
# Chapter 10: Magellan RoadMate POI Manager

The Alert feature is an audible alarm that lets you know when you are within a certain distance of the POI. You can set an initial reminder (Distance 1) and a secondary reminder (Distance 2).



Select your preferred unit of measurement (Metres or Feet).

The Detection angle sets the range of alert in degrees from the POI.




Select Activate alert for this category to enable the alert settings.

When you have finished, select **OK**.

# Chapter 10: Magellan RoadMate POI Manager

## 10.7 Importing a Data File

The POI Manager software supports ASCII file format (.ASC,.CSV,.TXT), GPS Exchange file format (.GPS,.XML), Magellan Waypoint file format (.WPT,.RTE) and Garmin PCX5 Waypoint file format (.WPT,.RTE).

Click on the **Open** button  .

Select the file that you would like to import and click **Open**.

Start by choosing which line in the data file to start importing data from. If your data file has a header row this row will generate an error, so you should start at line two or below.

Next, choose how the data is separated and click on **Next**.

You now need to define the data columns. Click on the pull-down menu and assign a field name to the appropriate column. Click on **Finish**.

Click on the **Save POI file** button. Assign a name to your file and click on **Save**.

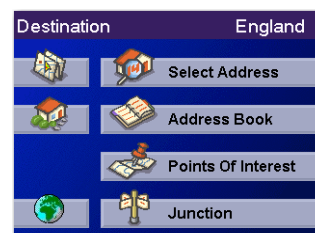
Close the POI File Editor. Select the POI file that you just created and click on the transfer button (right arrow) to upload the file to your Magellan RoadMate.

See page 68 for information on accessing custom POIs on your Magellan RoadMate.

# Chapter 11: Basic Operation of Vehicle Navigation

## 11.1 Turning the Magellan RoadMate On Out of the Box

Slide the **RESET** switch, located at the top of the unit (see “Top View” on page 6) to position “1”. If the power is connected properly or if the battery is charged sufficiently, the Magellan screen will appear followed by the Warning screen. To comply with the warnings, press **OK**. Next, the Quick Tips screen will appear. We recommend that you view the Quick Tips to familiarise yourself more fully with the functionality of the Magellan RoadMate. Otherwise, select **ESC** to skip viewing the Quick Tips at this time. By default, the navigation application will launch and the Destination screen will appear.



### 11.1.1 Suspend Power or “Sleep” Mode

While the **RESET** switch is in position “1”, you can suspend power or put the unit in “sleep” mode by pressing the **SUSPEND** key (see “Front View” on page 4). When it is in “sleep” mode, the unit’s display will turn itself off. Route guidance will resume normally when the unit wakes up. Under normal operating conditions, battery power can be maintained for up to two weeks while in “sleep” mode. We recommend that you use the Suspend key rather than switching the unit off in order to acquire the GPS signal faster upon resuming normal operation.

### 11.1.2 Power Management

The Magellan RoadMate can be configured to automatically go into “sleep” mode after a specified amount of time. Press the **MENU** key on the unit, then select **System Settings** and select **Power Management**. Select the **Auto Power Off** time and then select **ESC**. For more information on Power Management, see “Power Management” on page 84.

## 11.2 Resetting the Magellan RoadMate

To turn the power off completely or to reset the unit should it stop responding, slide the **RESET** switch to position “0”. Wait for approximately 10 seconds and then slide the **RESET** switch to position “1”. If a route was active when you reset the unit, when you power it back on you will be prompted to either resume or cancel the active route.

## 11.3 Adjusting the Volume

The **VOLUME CONTROL** lever is located at the top of the Magellan RoadMate (see “Top View” on page 6). Use the lever to set the volume of the speaker to a suitable level. The volume level indicator will appear on screen.

## 11.4 Repeating the Last Command

If you missed the last verbal command when routing to a destination, you can repeat it by pressing the **VOLUME CONTROL** lever down.

## 11.5 Making Selections

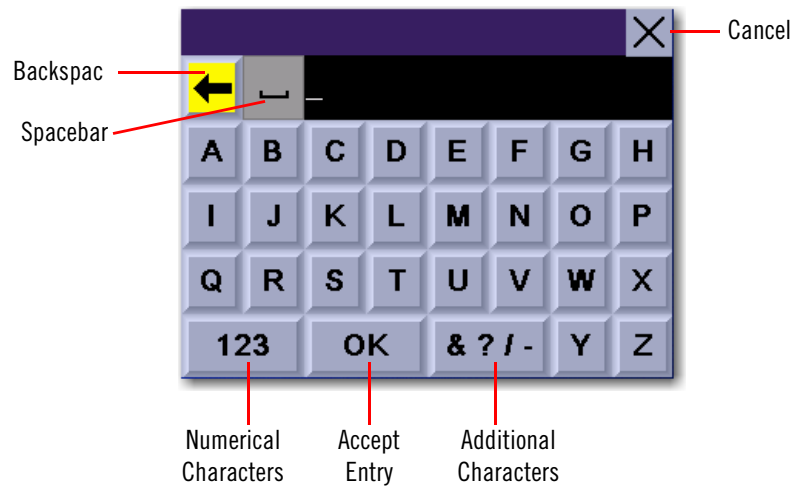
The Magellan RoadMate comes equipped with a touch screen. To make a menu selection or to enter characters, simply touch the screen in the location of the item you would like to select.

You can also use the **NAVIGATION** key (see “Front View” on page 4) to scroll around the screen and highlight the item to select. When the required item is highlighted, press the **ENTER** key to select the item.

# Chapter 11: Basic Operation of Vehicle Navigation

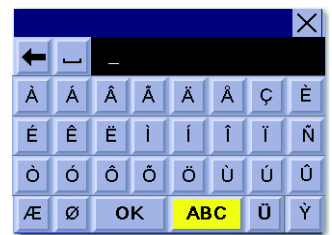
## 11.6 Inputting Text Characters

Whenever you need to input names or street addresses, etc., the Magellan RoadMate will display a keyboard. Touch the letter you want. If you make a mistake, use the Backspace key to go back one character at a time. The Spacebar is used to insert spaces between characters or words.



## 11.7 Additional Characters (“&?/-” Button)

When you are entering characters, you may need to add punctuation or other special characters. When available, if you press the **More** button a keypad will appear with the characters shown here.



## 11.8 Numerical Characters (“123” Button)

When available, if you press the **123** button a keypad will appear with the numerical characters shown here.



# Chapter 11: Basic Operation of Vehicle Navigation

## 11.9 What Is QuickSpell?

The Magellan RoadMate uses QuickSpell technology to provide you with the fastest possible character entry method. QuickSpell eliminates the possibility of a misspelled word or looking for a town or street that is not in the loaded database. As you begin entering characters, the QuickSpell feature of the Magellan RoadMate dims out those characters that are not available, thereby speeding up the data entry process.

For example:

Suppose that you need to input the name of a town--in this case, Norwich.

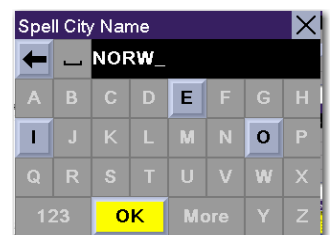
Select "N".



Select "O".

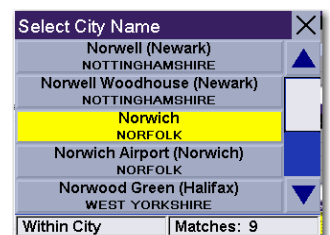


When enough characters have been entered, the Magellan RoadMate will automatically display the list of towns. Or, if you feel that enough characters have been entered, select **OK**.



Use the Navigation key to scroll the list up or down and select "Norwich" from the list.

If the list is still too long, press **ESCAPE** to return to the keyboard and continue entering characters. The list of items found in the database is limited to 100 items. When over 100 items have been found, "Matches: > 100" will be displayed shown in the bottom right corner of the display.

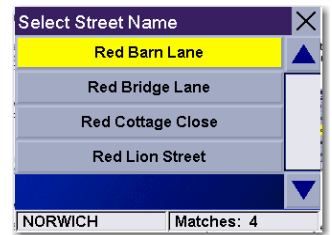


# Chapter 11: Basic Operation of Vehicle Navigation

## 11.10 Multi-Word Indexing

The Magellan RoadMate employs a search feature known as “Multi-Word Indexing”. This feature enables you to search the database for possible matches based on the characters that have been entered. The returned matches will start with the characters that have been entered. For example:

You are searching for a street called “Red Barn Lane”. Rather than spell the entire name of the street, you can simply enter “Red”. The Magellan RoadMate will return all database entries containing the word 'Red' as part of the street name. The returned list is subject to the additional parameters set by the search, such as the town or county that was entered.



The database only indexes the base names of streets. In the example above, only the words “Red” and “Barn” will be indexed.

When entering street names, do not enter prefixes such as “N” or “North” unless the whole word is part of the street name. By entering “N” the search will return all streets starting with the letter “N”.

Also, do not enter suffixes such as “St” or “Ave” or “Rd” unless the whole word is part of the street name. By entering “St” the search will return all words starting with “St”.

Town names and Points of Interest are also Multi-Word Indexed in the same way as street names. By entering the letters ‘Port’ or ‘Talbot’ a list of town names containing these words, one of which will be Port Talbot, will be returned. Entering part of a POI name will return all POIs within the selected category which contain the letters or text that you are searching for.

# Chapter 12: Travelling

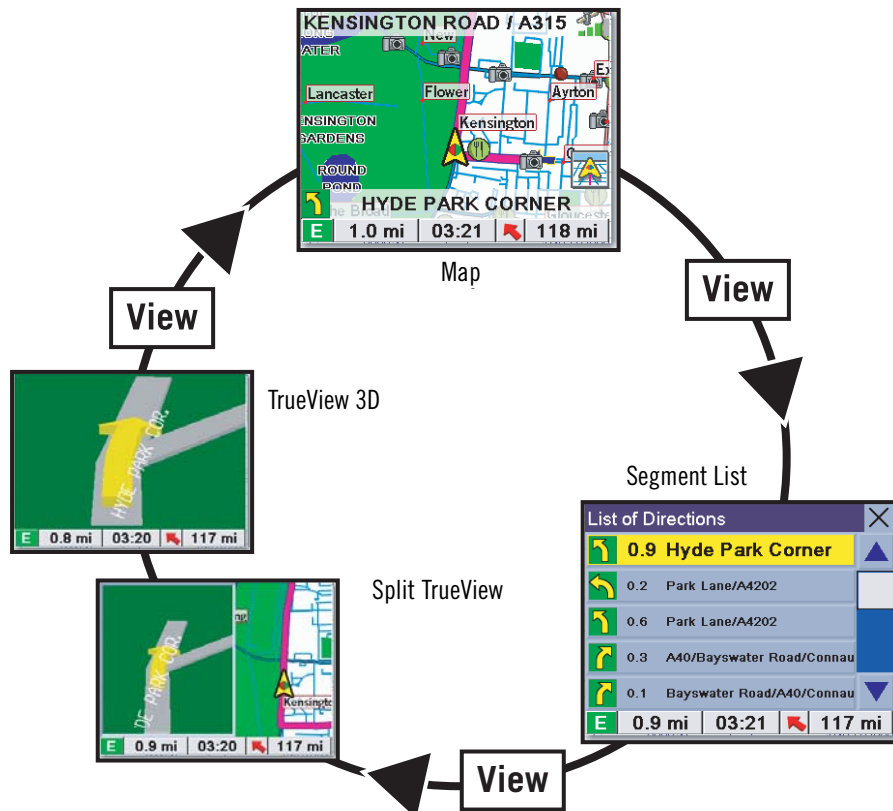
## 12.1 Guidance Information Screens

The Magellan RoadMate has three screens that you can use for help in travelling to your destination: the Map screen, the Segment List screen and the TrueView 3D/Split TrueView screen.

**Map:** When a new destination is selected and calculated, the Map screen will be displayed. This screen will display a map of your surrounding area along with the planned route (if calculated) and information about the route. This screen can be accessed when no route has been calculated by selecting **Map** or by pressing the **VIEW** key (page 4) when you are at the Destination screen.

**Segment List:** This screen will only be available if a route has been calculated. This screen will display a list of segments to follow in order to arrive at the destination. It can also be used to exclude a segment and then recalculate the route. To access the Segment List screen, press the **VIEW** key (page 4) when you are viewing the Map screen.

**TrueView 3D:** This screen will only be available when a route has been calculated. This screen will display the next segment as a 3D graphic. It will help you to know which lane to be in and provides you with an easy-to-follow picture of the next segment. To access the TrueView 3D screen, press the **VIEW** key (page 4) while you are viewing the Segment List. You can also show the TrueView 3D in split mode (see “TrueView Options” on page 73). This view shows the TrueView screen on the left-hand side and the Map on the right-hand side.



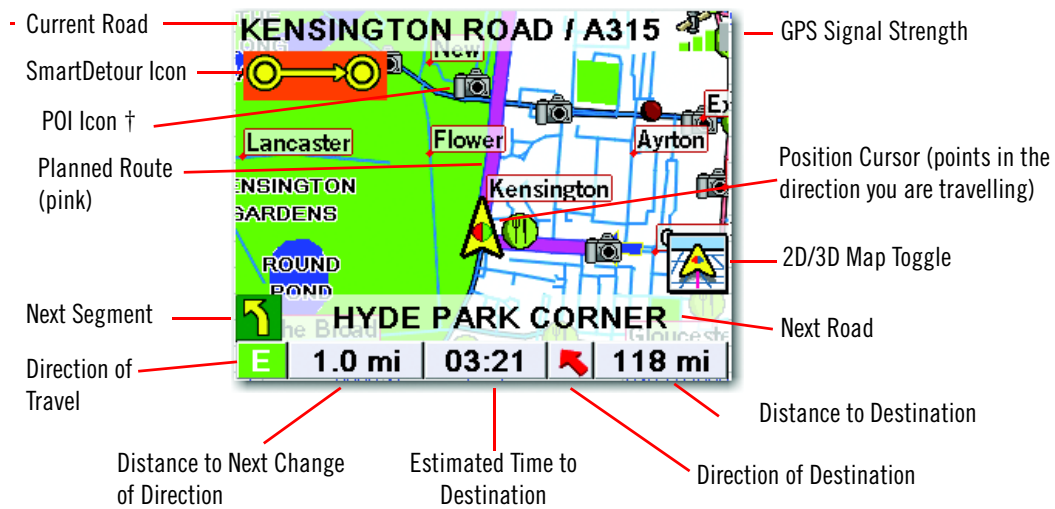
**NOTE:** The default unit of measurement for the European region is metric (meters). To modify the unit of measurement to miles reference “Map Options” on page 72.



# Chapter 12: Travelling

## 12.2 Map Screen

The Map screen is the most commonly used screen in the Magellan RoadMate, and it provides you with detailed information about where you are and where you are going.

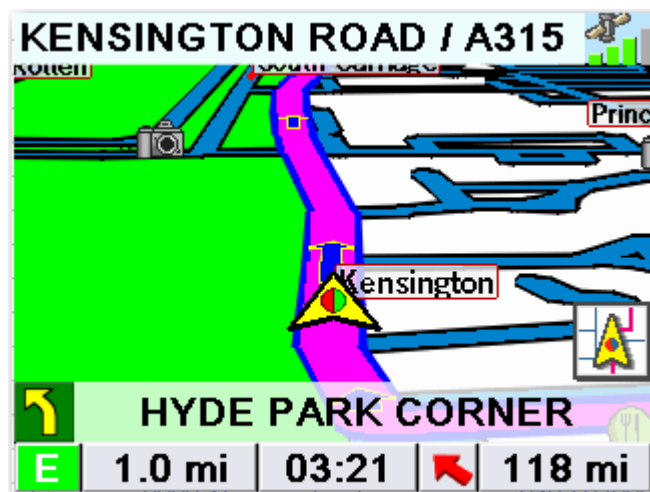


† By touching the POI icon on the screen, you can obtain information and route to it.

As you travel, the Map screen constantly updates your location and provides you with not only a map but also a visual indication of where you are on the map.

## 12.3 Changing from 2D to 3D Map View

The Map screen can be changed between 2D (overhead view of the position cursor with options between North up or heading up) and 3D (overhead view, slightly behind and always heading upwards). The 3D view offers a more realistic view, showing a perspective of the roads ahead. While in 3D Map mode, you can still touch icons on the screen to route to them while driving and you can zoom in and out. However, you cannot scroll the map. When in Split TrueView, the map portion of the screen will be in 2D mode.

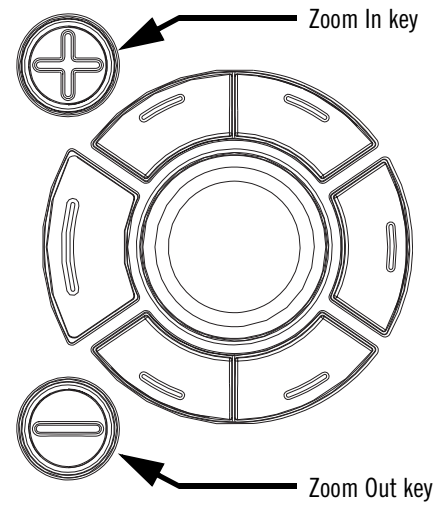


# Chapter 12: Travelling

## 12.4 Changing the Map Zoom Levels

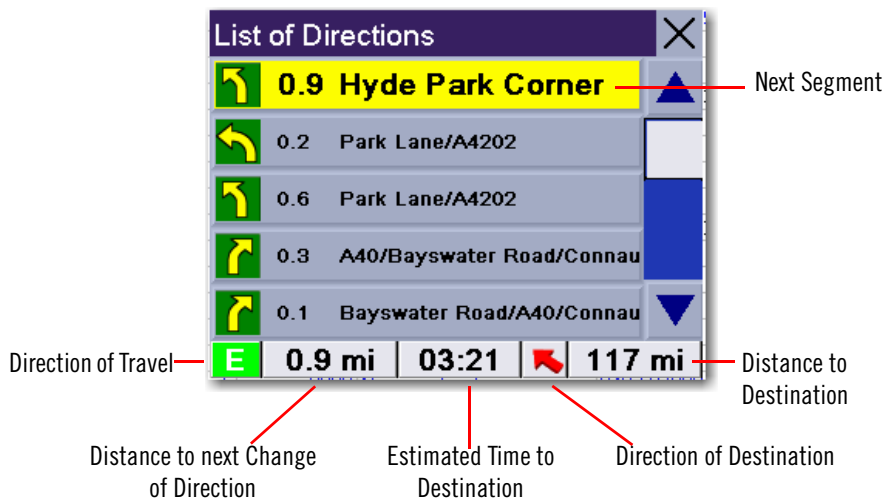
You can zoom in by pressing the + (plus) key or zoom out by pressing the - (minus) key.

Note: The Zoom In and Zoom Out keys can also be used to scroll through long lists. When you are viewing a list, press the Zoom Out key to scroll the list down one page at a time and press the Zoom In key to scroll the list up one page at a time.



## 12.5 List of Directions Screen

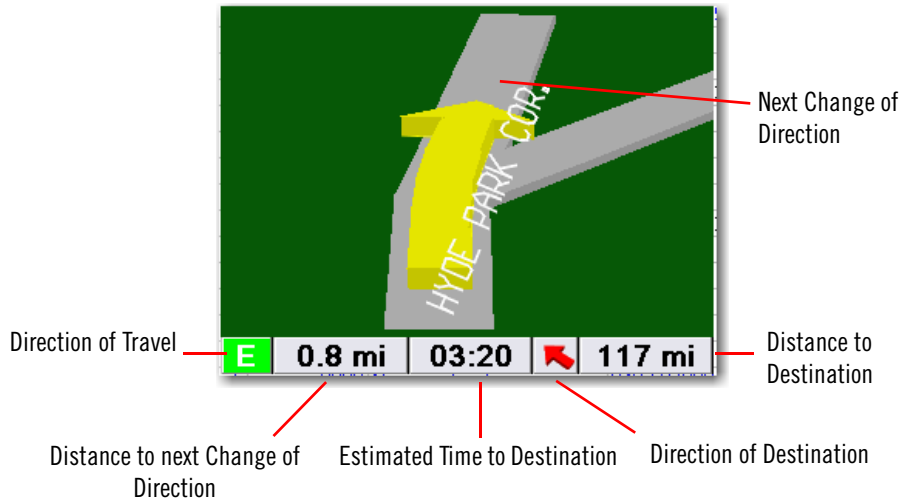
The List of Directions screen can be viewed only after a route has been calculated. From the Map screen, press the **VIEW** key to bring up a list of all of the segments along the route. When you have finished viewing the List of Directions screen, press the **VIEW** key twice to return to the Map screen, or wait a few moments and it will return automatically.



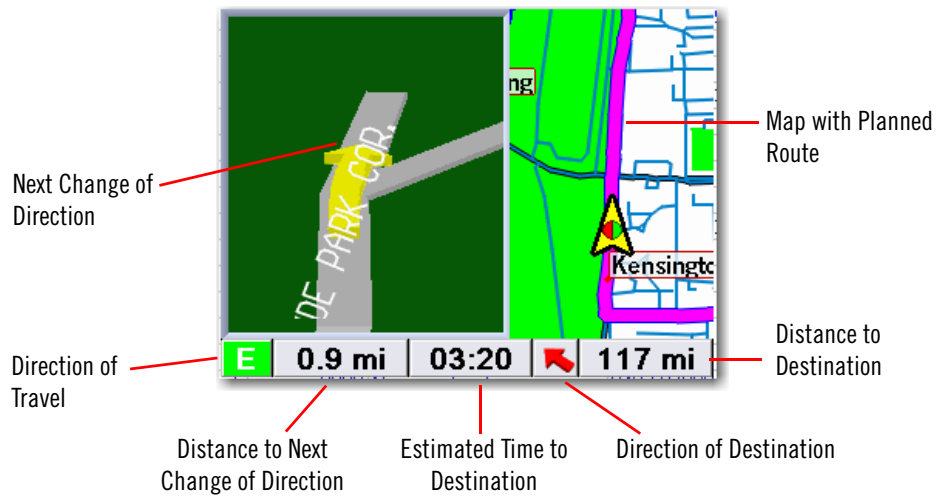
# Chapter 12: Travelling

## 12.6 TrueView 3D Screen

The Magellan RoadMate uses TrueView 3D technology to display a three-dimensional picture of the change of direction. The TrueView 3D screen can be viewed only after a route has been calculated. From the Map screen, press the **VIEW** key twice to view the TrueView 3D screen.



In split mode, the left half of the screen shows TrueView 3D, whereas the right half of the screen shows the Map.



# Chapter 12: Travelling

## 12.7 Choosing the Routing method

Every route is calculated based on the Routing method criteria selected. Every time a new destination is selected, the Magellan RoadMate prompts you for the method that will be used to calculate the route.

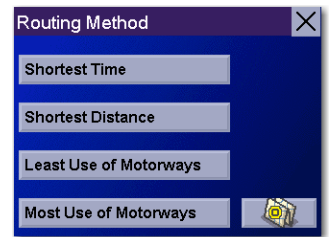
**Shortest Time:** This selection calculates a route that should take the least amount of time using speed limits and other information in the database. Other factors, such as traffic conditions, cannot be used in the calculation of shortest time.

**Shortest Distance:** This option calculates the route using the most direct route to the destination. This route may not be the fastest due to lower speed limits, left turns or other factors.

**Least Use of Motorways:** This selection calculates the route avoiding motorways whenever possible.

**Most Use of Motorways:** This selection calculates the route using motorways as much as possible. This option will use toll roads unless specified. See “Route Preferences” on page 74.

**View Destination on Map:** Before you select your Routing Method, you can see where you are going.

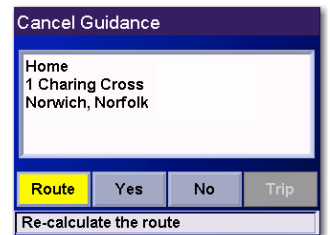


## 12.8 Changing the Routing Method

While you are routing and viewing the Map screen, Segment List screen or TrueView 3D screen, press the **ESCAPE** key.

Select **Route**, then select the new routing method.

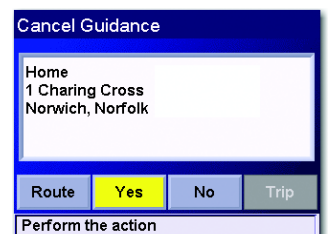
The route will be re-calculated using the new Routing Method chosen and the Map screen will be displayed. Press the **VIEW** key to see the Segment List with the new route.



## 12.9 Cancelling a Planned Route

While viewing the Map screen, Segment List screen or TrueView 3D screen, press the **ESCAPE** key.

Select **Yes** to cancel the route and display the Destination screen.



# Chapter 12: Travelling

## 12.10 Detouring from the Planned Route

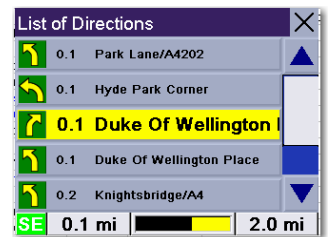
If you leave the planned route, the Magellan RoadMate will get you back on course in one of three ways.

1. If, while driving, you detour from the planned route, the Magellan RoadMate will automatically recalculate the route based on your new vehicle position.
2. If you leave the planned route before it has been completed and you turn off your vehicle, the Magellan RoadMate will switch to battery power, unless your cigarette lighter maintains constant power. In either situation, the unit will automatically suspend power when this is enabled through customisation. While in “sleep” mode, navigation functions will be suspended and guidance will resume when the unit wakes up.
3. If while routing, the unit fails to respond, reset the unit as described on page 28. The Resume Guidance screen will appear.  
Select **Resume** to continue the route to the selected destination.  
Select **Cancel** to clear the route and display the Destination screen.

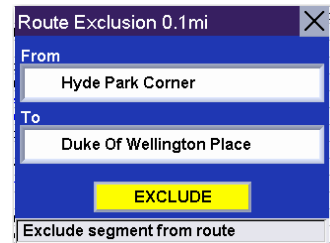
## 12.11 Excluding a Segment in the Planned Route

While you are travelling or setting up your destination you may need to exclude one of the segments in the Segment List. This could be due to an accident or street maintenance that you want to avoid. The Magellan RoadMate provides you with tools to select a specific segment, exclude it from the planned route and reroute the trip.

Press the **VIEW** key to get to the Segment List. Select the segment you would like to exclude.



The details for the segment will be displayed. Select **Exclude**.



The trip will be recalculated, excluding the selected segment. This calculation is done using the same Routing method that was chosen originally. After the route has been recalculated, the Map screen will be displayed.

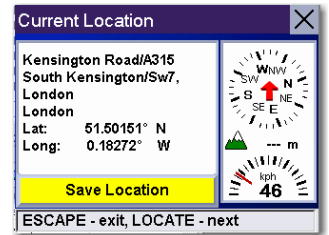


# Chapter 12: Travelling

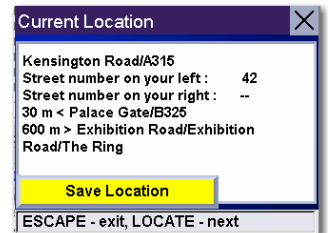
## 12.12 Displaying Information About Your Current Location

Whenever you want to view information about your current location you can press the **LOCATE** key.

The first screen will display your heading and the street that you are on, the county and town you are currently travelling in, the latitude and longitude of your current location, a compass and your speed.



The next screen will display the street that you are currently travelling along, the distance to the next street on the map and the distance from the last street you passed.

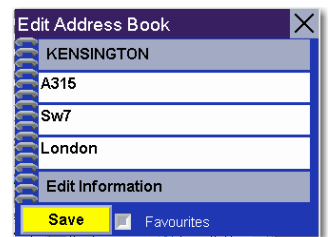


## 12.13 Saving Your Current Location to Your Address Book

While you are in the Locate screen, you can save your current location to your Address Book.

Select **Save Location**.

The information about your location will be displayed. Select **Edit Name** and/or **Edit Information** and use the keypad to assign a name to the location and other information about it. If the point you are saving is off-road, the nearest road information will be used.



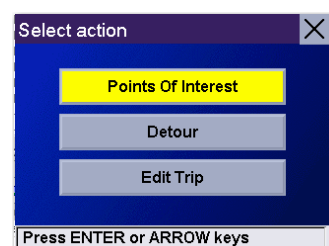
When you have finished, select **Save**. The location will be saved to your Address Book and you will be returned to the Locate screen.

## 12.14 Finding POIs Along Your Route

When you are driving along a route, if you need to find a petrol station, cash point or other POI, the Magellan RoadMate can find the nearest POI and route to it. Then, when you have completed the detour, resume guidance to your original destination.

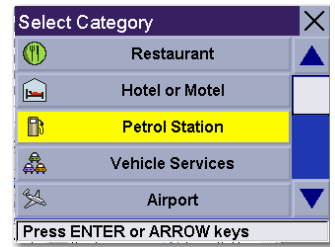
When you are driving along a route, press the **ENTER** key.

Select **Points Of Interest**.

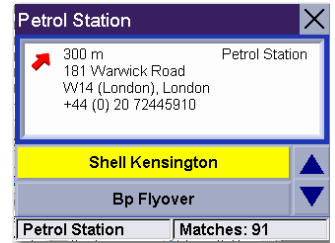


# Chapter 12: Travelling

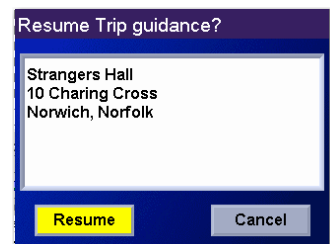
Select the required POI category.



A list of the nearest POIs will be displayed. Use the Navigation key to scroll the list up or down (if necessary) and select the required POI.



The Magellan RoadMate will calculate a new route to the selected POI from your current position. When you have arrived at the new destination, you will be prompted to resume guidance to your original destination. Select **Resume**. The Magellan RoadMate will calculate the route to your original destination using the Routing method that was previously selected.

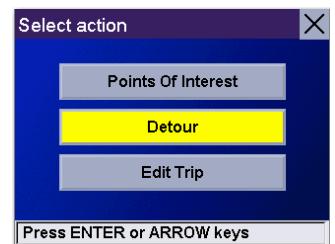


## 12.15 Finding a Detour Along Your Route

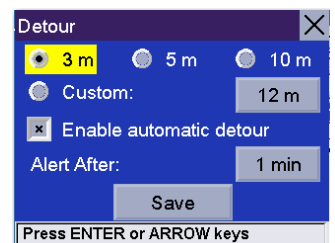
When you are driving along a route, if you encounter traffic, road construction or another situation that you may need to navigate around, the Magellan RoadMate can calculate an alternative route to your destination.

When you are driving along a route, press the **ENTER** key.

Select **Detour**.

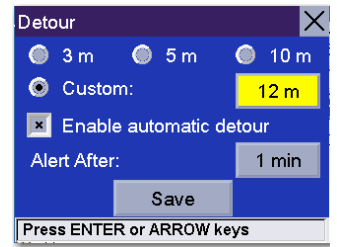


Select the distance of the detour. Select **3 miles**, **5 miles** or **ten miles**.

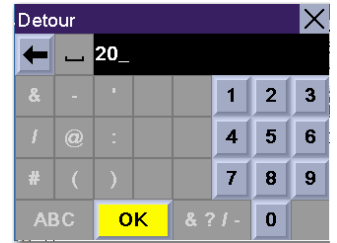


# Chapter 12: Travelling

Or you can enter a custom distance. Select **Custom** and select the custom distance.

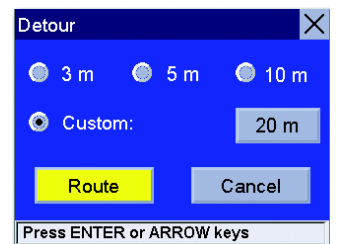


Enter the number of miles for your detour and then select **OK**.



Select **Route**. The Magellan RoadMate will recalculate the alternative route to your destination.




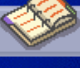



You can also choose to let the Magellan RoadMate route you around traffic automatically by enabling smart detour. See "Detour Options" on page 74.





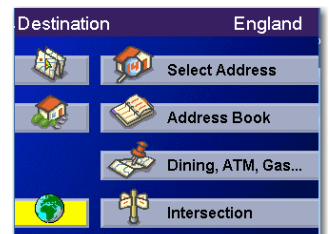
# Chapter 13: Selecting Destinations

## 13.1 Destination Screen

	Destination	England	
Map Button – page 33		 <b>Select Address</b>	Current Country for Destination – page 41
Home Button – page 41		 <b>Address Book</b>	Select Address – page 42
		 <b>Points Of Interest</b>	Address Book – page 46
Globe Button – page 41		 <b>Junction</b>	Points of Interest – page 60
			Junction – page 64

## 13.2 Country Selection

Country selection is used to help speed up searches by narrowing down the database. Before entering a destination, ensure that you select the country where your destination is located. To select the country, select the **Globe** button, then select the country that you would like to search. The current destination country will be displayed at the top of the Destination screen.



## 13.3 Entering and Routing to Your Home Address

The Magellan RoadMate enables you to enter an address to assign to your Home button. The Home button allows you one-touch access to the address that you route to most often. Select the **Home** button.

If you are using this button for the first time, you will be prompted to enter an address. Select **Yes**.

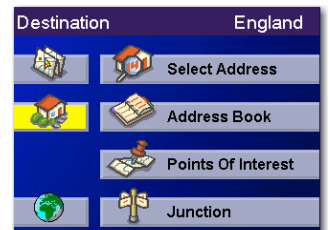
Select either Search by Town, Search by Postcode or Search by County. For this example select **Search by Town**.

Enter characters that start a word within the town name (see “Multi-Word Indexing” on page 31). Select **OK**. Use the Navigation key to scroll the list up or down (if necessary) and select the required town.

Enter characters that start a word within the street name (see “Multi-Word Indexing” on page 31). Do not enter prefixes such as “North” or “N” or the type of street such as “Ave.” or “Street”. Select **OK**. Use the Navigation key to scroll the list up or down (if necessary) and select the required street.

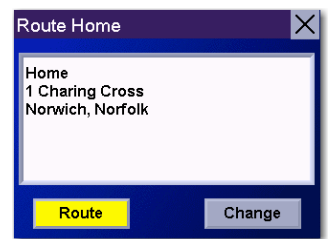
Enter the address. The acceptable range of street numbers will be displayed at the top of the screen. Enter the street number and select **Done**.

At this point you can choose to edit the information or, if you have finished, select **Save**.

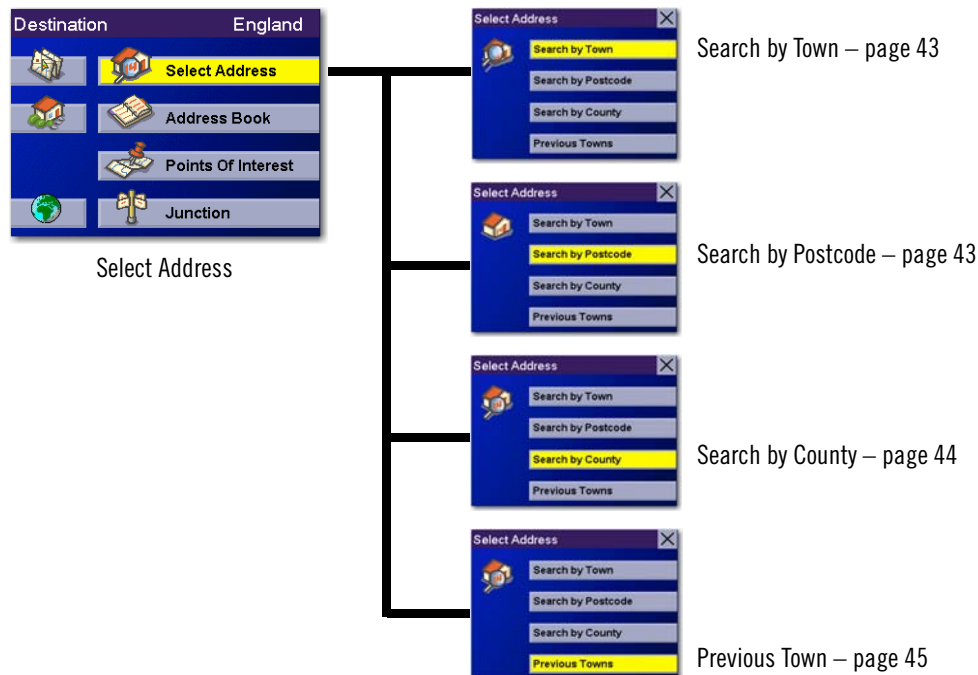


# Chapter 13: Selecting Destinations

Now, when you press the Home button, you will be prompted to either route to or change the Home address.



## 13.4 Selecting a Destination Using Select Address



A destination can be created by entering the street address that you want to go to. This address is not automatically added to your Address Book but is saved to your Previous Destinations list if you have routed to it. You have four options: Search By Town, Search by Postcode, Search By County or Previous Town. Use Search By Town when you know the town that the address can be found in. Use Search by Postcode if you are unsure of how to spell the town, but you know the Postcode. Use Search By County when you do not know or are unsure of the town name. You will be given a listing of all of the towns for the county you select that have the street name you are looking for. Avoid having to re-enter a town that you have used before and speed up your search by using Previous Town. Additionally, the Previous Towns list places your current town at the top of the list.

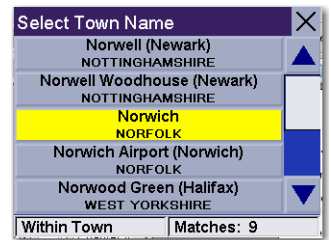
# Chapter 13: Selecting Destinations

## 13.4.1 Search By Town

From the Destination screen, select **Select Address** and then select **Search By Town**.

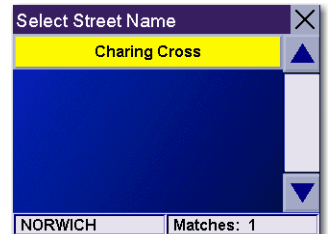
Enter characters that start a word within the town name (see “Multi-Word Indexing” on page 31). Select **OK**.

Use the Navigation key to scroll the list up or down (if necessary) and select the required town.



Enter characters that start a word within the street name (see “Multi-Word Indexing” on page 31). Do not enter prefixes such as “North” or “N” or the type of street such as “Ave.” or “Street”. Select **OK**.

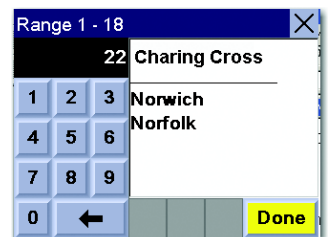
Use the Navigation key to scroll the list up or down (if necessary) and select the required street.



Enter the street address. The acceptable range of numbers will be displayed at the top of the screen. Select **Done**.

Select the required routing method.

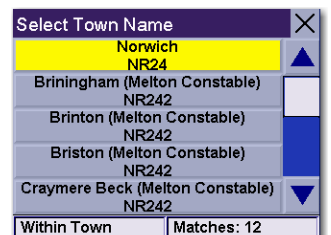
The Magellan RoadMate will calculate the route. When the calculations are complete, the Map screen will be displayed.



## 13.4.2 Search by Postcode

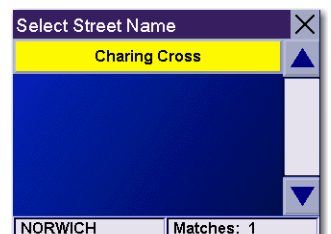
From the Destination screen, select **Street Address**, then select **Search by Postcode**.

Enter the Postcode select **OK**, then select the town.



Enter characters that start a word within the street name (see “Multi-Word Indexing” on page 31). Do not enter prefixes such as “North” or “N” or the type of street such as “Ave.” or “Street”. Select **OK**.

Use the Navigation key to scroll the list up or down (if necessary) and select the required street.

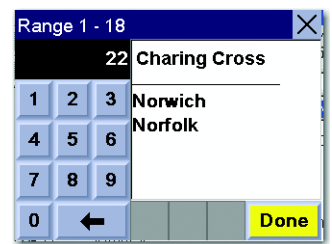


# Chapter 13: Selecting Destinations

Enter the street address. The acceptable range of numbers will be displayed at the top of the screen. Select **Done**.

Select the required routing method.

The Magellan RoadMate will calculate the route. When the calculations are complete, the Map screen will be displayed.

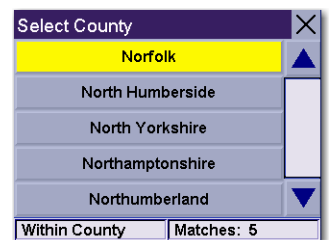


## 13.4.3 Search By County

From the Destination screen, select **Street Address**, then select **Search By County**.

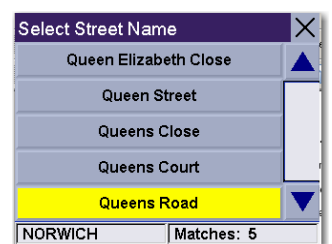
Enter the first few characters of the county and select **OK**.

Select the county.

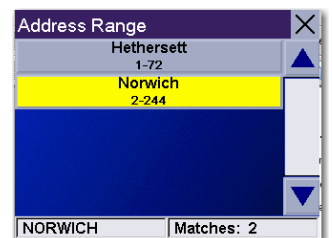


Enter characters that start a word within the street name (see “Multi-Word Indexing” on page 31). Do not enter prefixes such as “North” or “N” or the type of street such as “Ave.” or “Street”. Select **OK**.

Use the Navigation key to scroll the list up or down (if necessary) and select the required street.



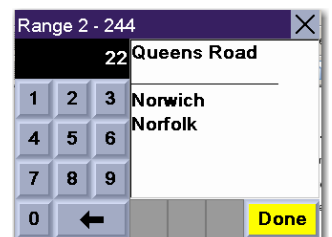
Select the required town from the list. Only those towns that contain the street name and are within the county selected are displayed.



Enter the street address. The acceptable range of numbers will be displayed at the top of the screen. Select **Done**.

Select the required Routing method.

The Magellan RoadMate will calculate the route. When the calculations are complete, the Map screen will be displayed.

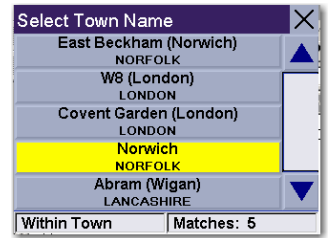


# Chapter 13: Selecting Destinations

## 13.4.4 Previous Town

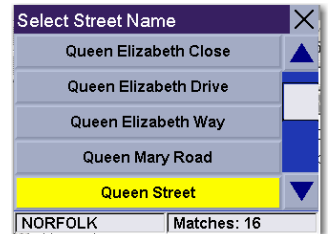
From the Destination screen, select **Street Address**, then select **Previous Town**.

Select the town from the list.



Enter characters that start a word within the street name (see “Multi-Word Indexing” on page 31). Do not enter prefixes such as “North” or “N” or the type of street such as “Ave.” or “Street”. Select **OK**.

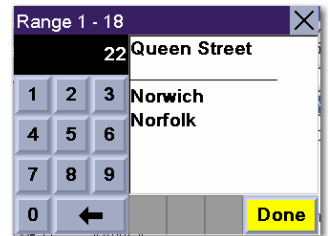
Use the Navigation key to scroll the list up or down (if necessary) and select the required street.



Enter the street address. The acceptable range of numbers will be displayed at the top of the screen. Select **Done**.

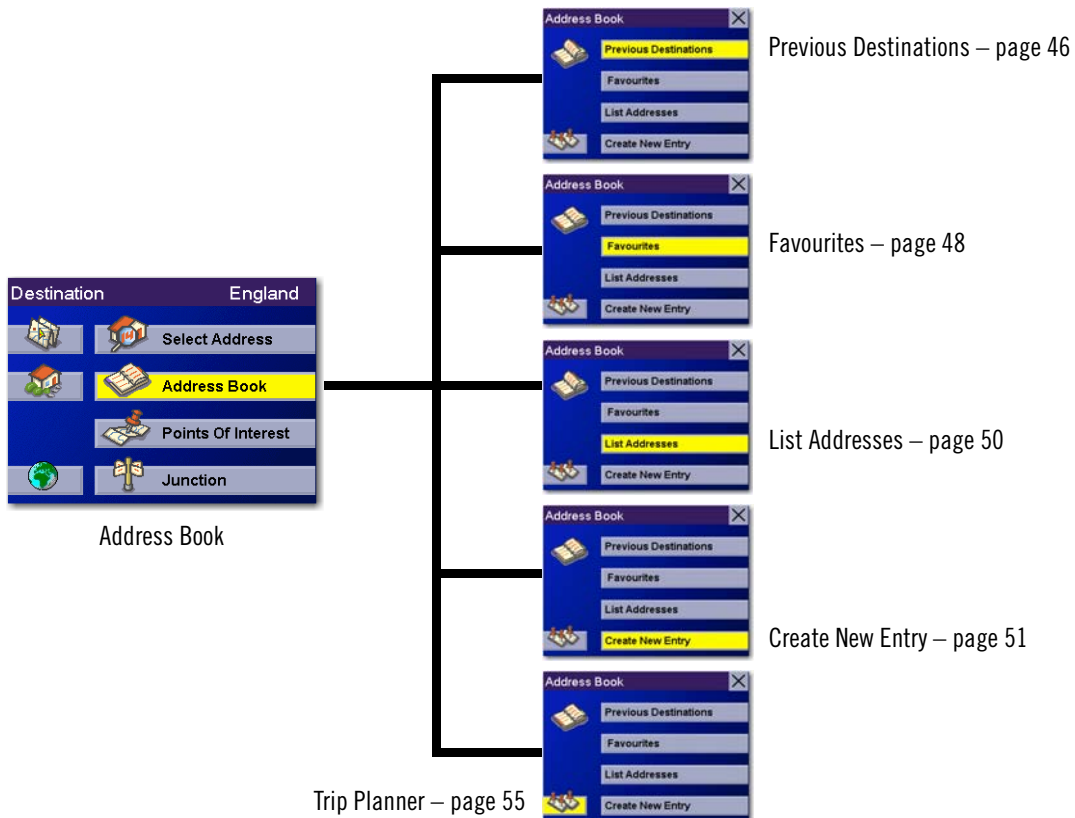
Select the required routing method.

The Magellan RoadMate will calculate the route. When the calculations are complete, the Map screen will be displayed.



# Chapter 13: Selecting Destinations

## 13.5 Selecting a Destination Using the Address Book



The Address Book can store up to 200 addresses. When you select Address Book you are given five options: **Previous Destinations** lets you select from a list of the last 50 destinations that you routed to; **List Addresses** displays a list of all of the addresses that you have stored in your Address Book; **Favourites** gives you a shortened list of entries from your Address Book marked as Favourites; **Create New Entry** lets you add a new address to your Address Book; and **Trip Planner** (indicated by the Trip button) lets you create a multi-destination trip from entries.

### 13.5.1 Previous Destinations

From the Destination screen, select **Address Book**, then select **Previous Destinations**.

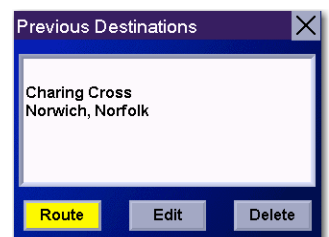
Use the Navigation key to scroll the list up or down (if necessary) and select the required previous destination.



Select **Route**.

Select the required routing method.

The Magellan RoadMate will calculate the route. When the calculations are complete, the Map screen will be displayed.



#### 13.5.1.1 Saving a Previous Destination to the Address Book

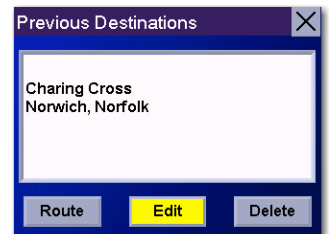
From the Destination screen, select **Address Book**, then select **Previous Destinations**.

# Chapter 13: Selecting Destinations

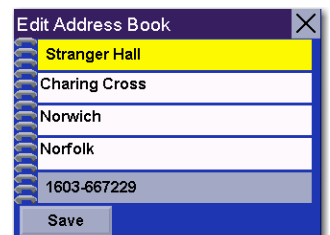
Use the Navigation key to scroll the list up or down (if necessary) and select the required previous destination.



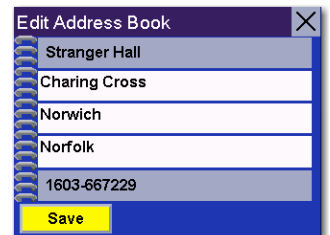
Select **Edit**.



The top line (Name) and the bottom line (Information) can be edited. The address cannot be changed. Select the line you want to modify. Use the keypad to enter the required text and select **OK**.



When you have finished making changes, select **Save**, then press **ESCAPE**.



# Chapter 13: Selecting Destinations

## 13.5.1.2 Deleting A Previous Destination

From the Destination screen, select **Address Book** , then select **Previous Destinations**.

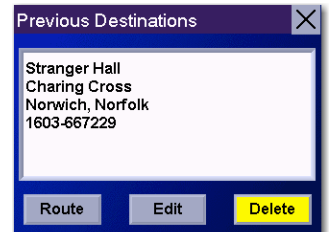
Use the Navigation key to scroll the list up or down (if necessary) and select the required previous destination.



Select **Delete**.

A dialog box will appear to confirm your selection. Select **Yes**.

The Previous Destination will be deleted from the list.



## 13.5.2 Favourites

You can add address book entries to your Favourites list by selecting the Favourites box at the bottom of the Edit Address Book screen. Only address book entries can be saved as Favourites. Previous Destinations must be saved to the Address Book first and can then be designated as a favourite. The Favourites list is a shorter list of those address book entries that you travel to often.

From the Destination screen, select **Address Book**, then select **Favourites**.

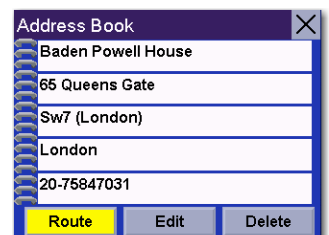
Use the Navigation key to scroll the list up or down (if necessary) and select the destination from the list of addresses.



Select **Route**.

Select the required Routing method.

The Magellan RoadMate will calculate the route. When the calculations are complete, the Map screen will be displayed.



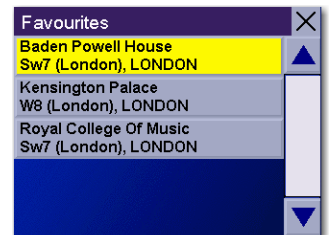


# Chapter 13: Selecting Destinations

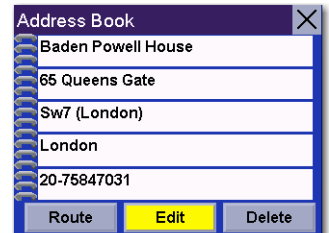
## 13.5.2.1 Editing a Favourite

From the Destination screen, select **Address Book** , then select **Favourites**.

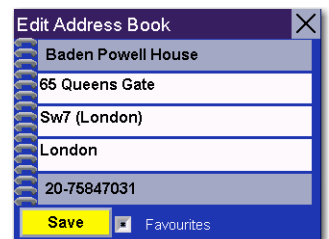
Use the Navigation key to scroll the list up or down (if necessary) and select the required favourite.



Select **Edit**.



The top line (Name) and the bottom line (Information) can be edited. The address cannot be changed. Select the line you want to modify. Use the keypad to enter the required text and select **OK**.



When you have finished making changes, select **Save** and, then press **ESCAPE**.

## 13.5.2.2 Deleting A Favourite

From the Destination screen, select **Address Book**, then select **Favourites**.

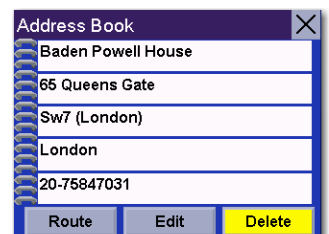
Use the Navigation key to scroll the list up or down (if necessary) and select the required favourite.



Select **Delete**.

A dialog box will appear to confirm your selection. Select **Yes**.

The entry will be deleted from the list.



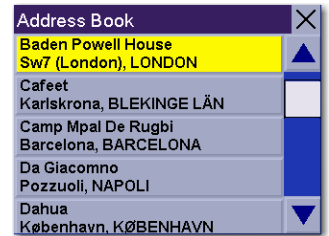
# Chapter 13: Selecting Destinations

## 13.5.3 List Addresses

List Addresses shows all entries stored in your address book. It does not include previous destinations but does include those entries designated as Favourites.

From the Destination screen, select **Address Book**, then select **List Addresses**.

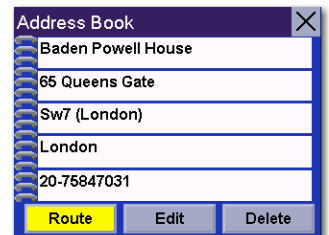
Use the Navigation key to scroll the list up or down (if necessary) and select the destination from the list of addresses.



Select **Route**.

Select the required routing method.

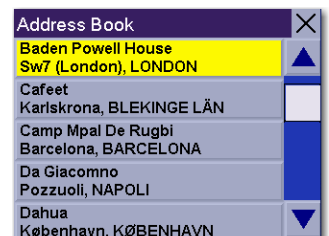
The Magellan RoadMate will calculate the route. When the calculations are complete, the Map screen will be displayed.



### 13.5.3.1 Editing an Address

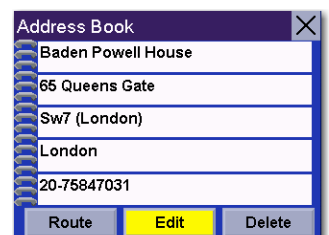
From the Destination screen, select **Address Book**, then select **List Addresses**.

Use the Navigation key to scroll the list up or down (if necessary) and select the required address.



Select **Edit**.

The top line (Name) and the bottom line (Information) can be edited. The address cannot be changed. Select the line you want to modify. Use the keypad to enter the required text and select **OK**. You can also designate the address as a favourite by checking the box at the bottom of the screen.



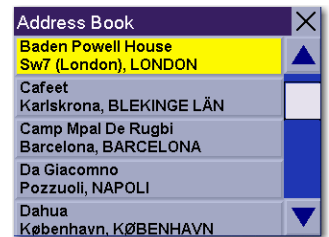
When you have finished making changes, select **Save** and then press **ESCAPE**.

# Chapter 13: Selecting Destinations

## 13.5.3.2 Deleting an Address

From the Destination screen, select **Address Book** , then select **List Addresses**.

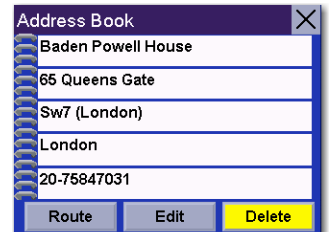
Use the Navigation key to scroll the list up or down (if necessary) and select the required address.



Select **Delete**.

A dialog box will appear to confirm your selection. Select **Yes**.

The address will be deleted from the list and you will be returned to the Address Book screen.



## 13.5.4 Create New Entry

Use Create New Entry to add entries to your address book. These entries can then be designated as Favourites to include in the Favourites list.

### 13.5.4.1 Search by Town

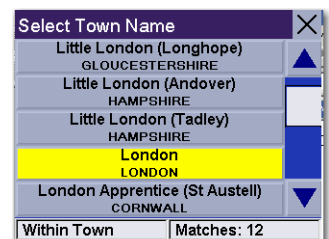
From the Destination screen, select **Address Book**, then select **Create New Entry**.

Select **Search by Town**.



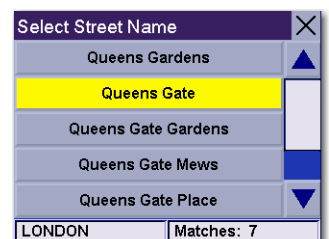
Enter characters that start a word within the town name (see “Multi-Word Indexing” on page 31). Select **OK**.

Use the Navigation key to scroll the list up or down (if necessary) and select the required town.



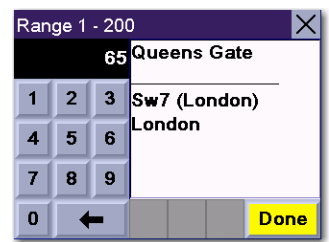
Enter characters that start a word within the street name (see “Multi-Word Indexing” on page 31). Do not enter prefixes such as “North” or “N” or the type of street such as “Ave.” or “Street”. Select **OK**.

Use the Navigation key to scroll the list up or down (if necessary) and select the required street.

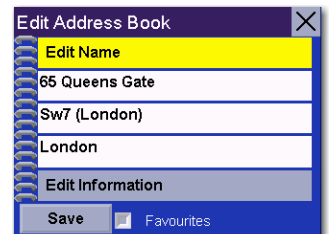


# Chapter 13: Selecting Destinations

Enter the street address. The acceptable range of numbers will be displayed at the top of the screen. Select **Done**.



The top line (Name) and the bottom line (Information) can be edited. The address cannot be changed. Select the line you want to modify. Use the keypad to enter the required text and select **OK**. You can also designate the address as a favourite by checking the box at the bottom of the screen.

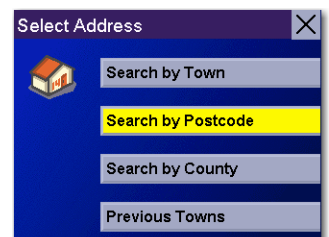


When you have finished making changes, select **Save** and, then press **ESCAPE**.

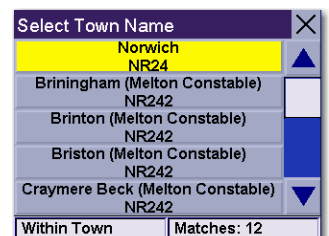
## 13.5.4.2 Search by Postcode

From the Destination screen, select **Address Book**, then select **Create New Entry**.

Select **Search by Postcode**.

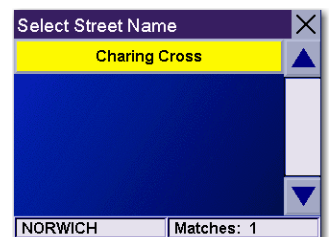


Enter the Postcode and select **OK**, then select the town.

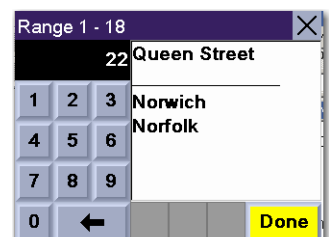


Enter characters that start a word within the street name (see "Multi-Word Indexing" on page 31). Do not enter prefixes such as "North" or "N" or the type of street such as "Ave." or "Street". Select **OK**.

Use the Navigation key to scroll the list up or down (if necessary) and select the required street.



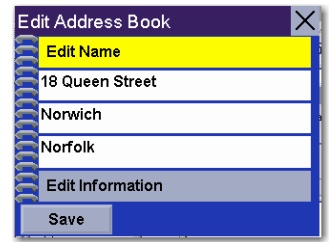
Enter the street address. The acceptable range of numbers will be displayed at the top of the screen. Select **Done**.



# Chapter 13: Selecting Destinations

The top line (Name) and the bottom line (Information) can be edited. The address cannot be changed. Select the line you want to modify. Use the keypad to enter the required text and select **OK**. You can also designate the address as a favourite by ticking the box at the bottom of the screen.

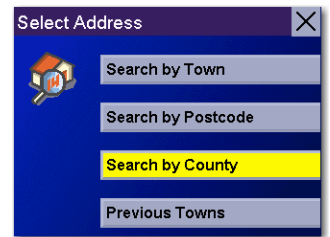
When you have finished making changes, select **Save** and then press **ESCAPE**.



## 13.5.4.3 Search by County

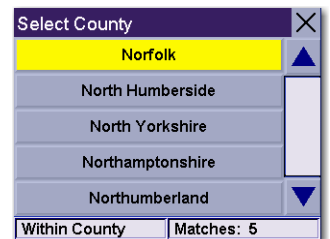
From the Destination screen, select **Address Book**, then select **Create New Entry**.

Select **Search by County**.



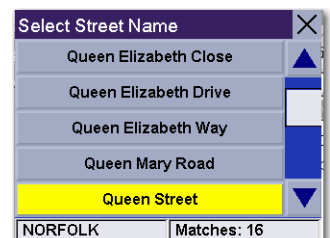
Use the keypad to enter the first few characters of the county and select **OK**.

Select the county.

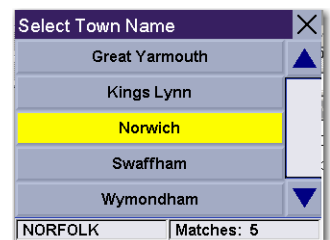


Enter characters that start a word within the street name (see “Multi-Word Indexing” on page 31). Do not enter prefixes such as “North” or “N” or the type of street such as “Ave.” or “Street”. Select **OK**.

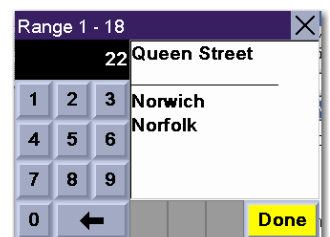
Use the Navigation key to scroll the list up or down (if necessary) and select the required street.



Use the Navigation key to scroll the list up or down and select the required town. (These are all of the towns in your loaded database that have the street name you selected.)



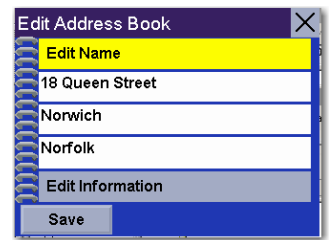
Enter the street address. The acceptable range of numbers will be displayed at the top of the screen. Select **Done**.



# Chapter 13: Selecting Destinations

The top line (Name) and the bottom line (Information) can be edited. The address cannot be changed. Select the line you want to modify. Use the keypad to enter the required text and select **OK**. You can also designate the address as a favourite by checking the box at the bottom of the screen.

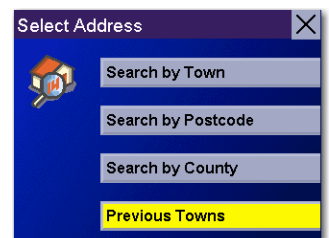
When you have finished making changes, select **Save** and then press **ESCAPE**.



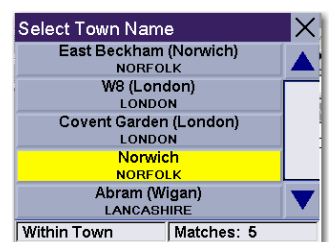
## 13.5.4.4 Previous Town

From the Destination screen, select **Address Book**, then select **Create New Entry**.

Select **Previous Town**.

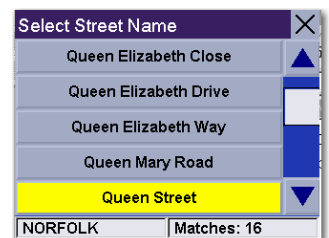


Use the Navigation key to scroll the list up or down (if necessary) and select the required town.

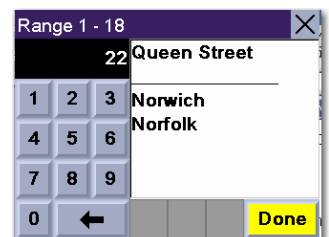


Enter characters that start a word within the street name (see “Multi-Word Indexing” on page 31). Do not enter prefixes such as “North” or “N” or the type of street such as “Ave.” or “Street”. Select **OK**.

Use the Navigation key to scroll the list up or down (if necessary) and select the required street.

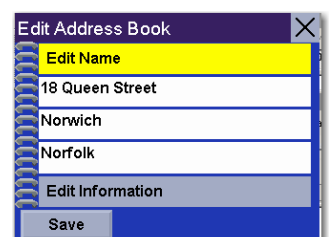


Enter the street address. The acceptable range of numbers will be displayed at the top of the screen. Select **Done**.



The top line (Name) and the bottom line (Information) can be edited. The address cannot be changed. Select the line you want to modify. Use the keypad to enter the required text and select **OK**. You can also designate the address as a favourite by checking the box at the bottom of the screen.

When you have finished making changes, select **Save** and then press **ESCAPE**.



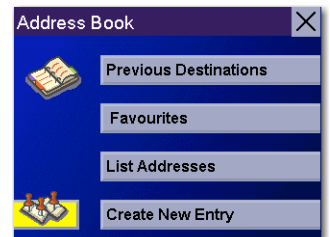
# Chapter 13: Selecting Destinations

## 13.5.5 Trip Planner

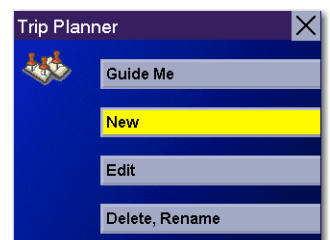
Using the Trip Planner, you can enter multiple destinations for your “trip” and route to each one of them in order.

### 13.5.5.1 New

From the Destination screen, select **Address Book**, then select **Trip** (Trip button).



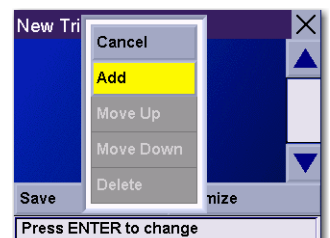
Select **New**.



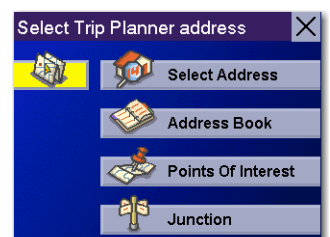
Use the keypad to enter a name for the new trip and select **OK**.



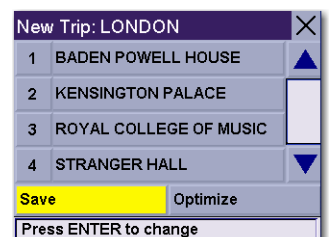
From the pop-up menu, select **Add**.



From the Select Trip Planner Address screen, select the method for adding a destination to your trip: **Map** (Map button) will add a destination by selecting a point on the map; **Select Address** will add a destination by creating a new address; **Address Book** will add a destination from a previous destination, Address Book or favourites; **Points Of Interest** will add a destination from the POI database; and **Junction** will add a destination of two intersecting streets.



Continue adding destinations. When you have finished, select **Save**.

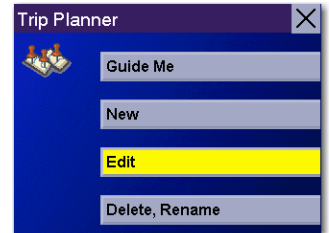


# Chapter 13: Selecting Destinations

## 13.5.5.2 Optimizing a Trip

With Route Optimization, you can sort the destinations in your trip from closest to farthest.

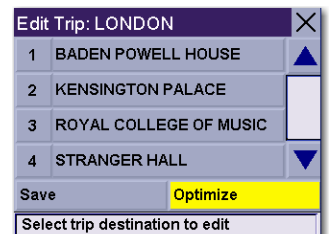
From the Trip Planner screen, select **Edit**.



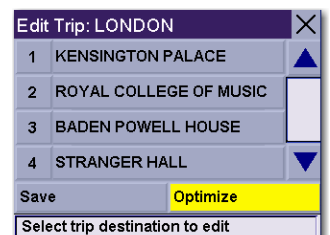
Select the trip to optimize.



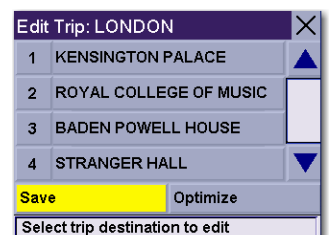
Select **Optimize**.



The destinations are sorted from closest to farthest from your current location.



Select **Save**.



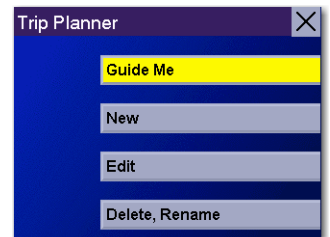


# Chapter 13: Selecting Destinations

## 13.5.5.3 Guide Me

From the Destination screen, select **Address Book**. Then select the **Trip** (Trip button).

Select **Guide Me**.



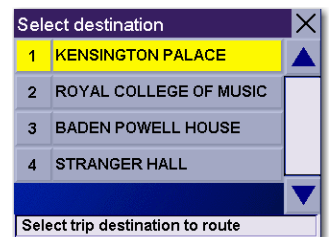
Select the Trip.



Select the first destination in the list that you would like to route to.

Note: Selecting the second destination in the list will exclude the first destination, selecting the third destination in the list will exclude the first and second destinations and so on.

Select the required routing method.

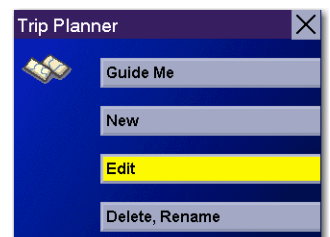


The Magellan RoadMate will calculate the route. When the calculations are complete, the Map screen will be displayed.

## 13.5.5.4 Edit

Destinations within a trip can be moved up or down, deleted or added to.

From the Trip Planner screen, select **Edit**.

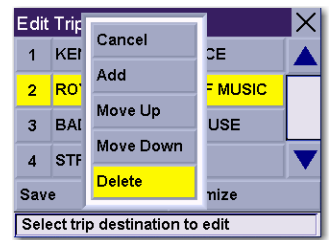


Select the trip to edit.



# Chapter 13: Selecting Destinations

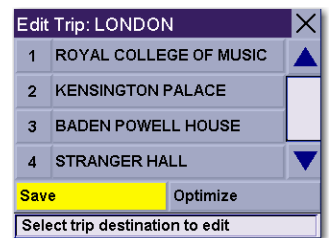
Select the destination that you would like to delete and select **Delete** from the pop-up menu.



Select the destination that you would like to change, and select **Move Up** from the pop-up menu.

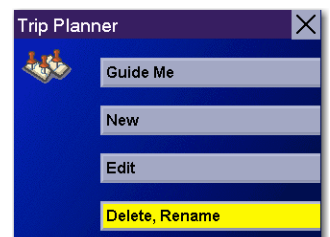


When you have finished, select **Save** and you will be returned to the Trip Planner screen.

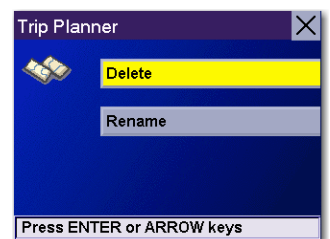


## 13.5.5.5 Delete and Rename

From the Trip Planner screen, select **Delete, Rename**.



Select **Delete**.

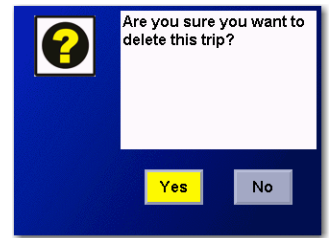


Select the trip that you would like to delete.

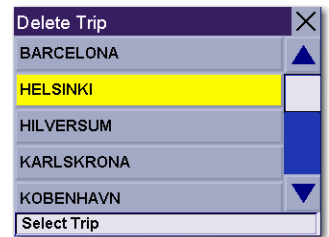


# Chapter 13: Selecting Destinations

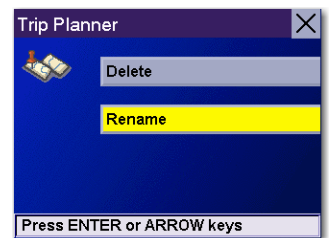
A dialog box will appear to confirm your selection. Select **Yes**.



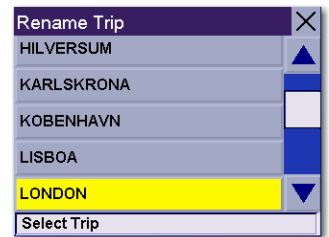
The trip has been deleted.



Select **Rename**.



Select the trip to be renamed.



Use the backspace key to delete the old name, then enter the new name for the trip. When you have finished, select **OK**.

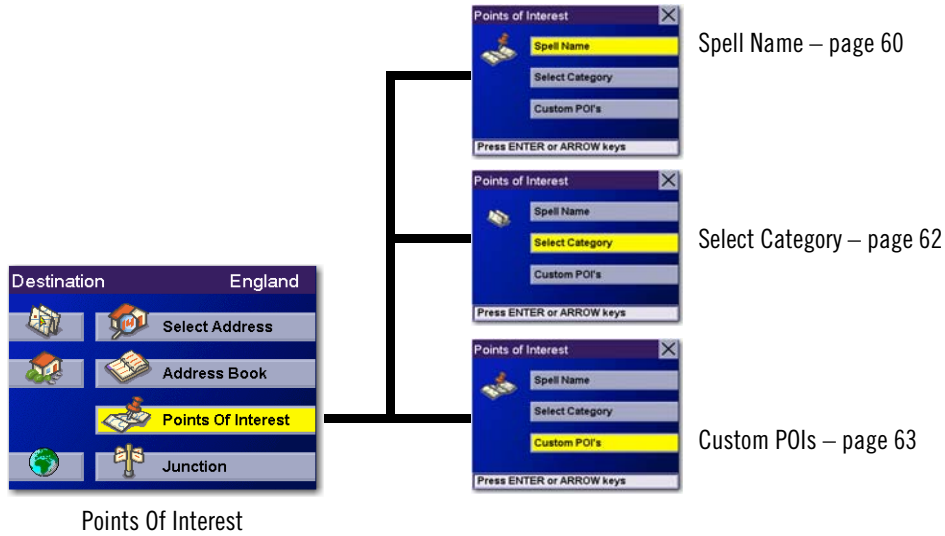


The trip has been renamed.



# Chapter 13: Selecting Destinations

## 13.6 Selecting a Point of Interest as a Destination



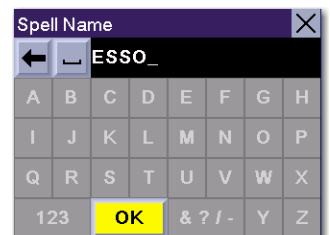
Points of Interest (or POIs) are commercial or recreational locations, landmarks or services that are preloaded into the Magellan RoadMate database. There are over six million POIs in the database, which range from restaurants, parks, petrol stations and banks, to schools and police stations and more. The purpose of the POI database (accessed through the Points Of Interest menu option) is to provide you with a list of popular destinations, so that you do not have to enter the address manually in order to route to them.

### 13.6.1 Spell Name

If you know the name of the POI that you are looking for, find it using the Spell Name feature. You can enter any word contained within the name and the Magellan RoadMate will return all entries containing that word.

From the Destination screen, select **Points Of Interest**, then select **Spell Name**.

Enter the name of the POI.



#### 13.6.1.1 Nearest

Selecting Nearest will list the POIs matching the name that you entered from closest to farthest from your current position. Select **Nearest**.



# Chapter 13: Selecting Destinations

Use the Navigation key to scroll the list up or down (if necessary) and select the required POI.

Select the required Routing method.

The Magellan RoadMate will calculate the route. When the calculations are complete, the Map screen will be displayed.

## 13.6.1.2 List By Town

If you select List by Town the POIs matching the name you entered within a selected town will be listed. Select **List by Town**.

Enter characters that start a word within the town name (see “Multi-Word Indexing” on page 31). Select **OK**.

Use the Navigation key to scroll the list up or down (if necessary) and select the required town.

Use the Navigation key to scroll the list up or down (if necessary) and select the required POI.

Select the required routing method.

The Magellan RoadMate will calculate the route. When the calculations are complete, the Map screen will be displayed.

## 13.6.1.3 Select Category

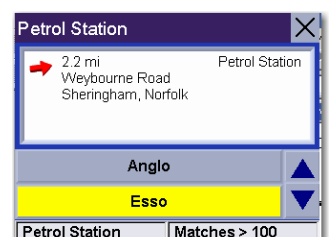
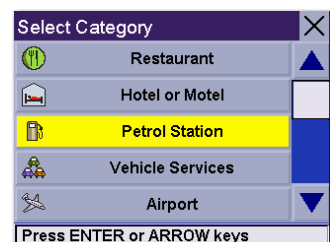
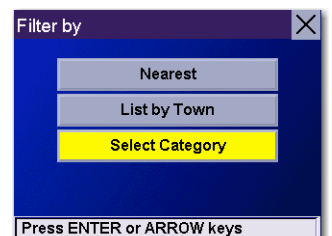
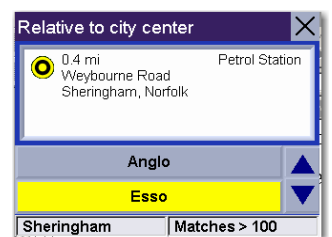
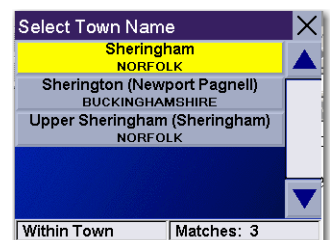
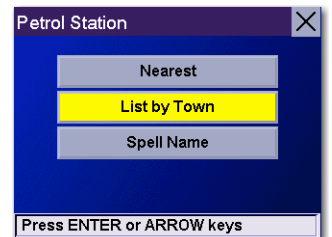
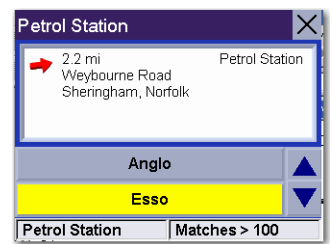
Selecting Select Category enables you to narrow the list of POIs by selecting the category of the name you spelled. Select **Select Category**. These POIs will be sorted from closest to farthest from your current position.

Use the Navigation key to scroll the list up or down and select the required POI category.

Use the Navigation key to scroll the list up or down (if necessary) and select the required POI.

Select the required Routing method.

The Magellan RoadMate will calculate the route. When the calculations are complete, the Map screen will be displayed.



# Chapter 13: Selecting Destinations

## 13.6.2 Select Category

If you do not know the name of the POI that you are looking for, but know the category (restaurant, bank, petrol station, etc.), you can find it using Select Category.

From the Destination screen, select **Points Of Interest**, then select **Select Category**.

Select the POI category.



### 13.6.2.1 Nearest

If you select Nearest the POIs in the selected category will be listed from closest to farthest. Select **Nearest**.



A list of all the POIs in the selected categories nearest to your current position will be displayed. Select the POI from the list.

Select the required routing method.



The Magellan RoadMate will calculate the route. When the calculations are complete, the Map screen will be displayed.

### 13.6.2.2 List by Town

If you select List by Town the POIs in the selected category within a specified town will be listed. Select **List by Town**.



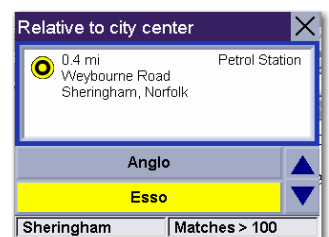
Enter the name of the town that you would like to search from. When you have finished, select **OK**.

Use the Navigation key to scroll the list up or down (if necessary) and select the required town.



Use the Navigation key to scroll the list up or down (if necessary) and select the required POI.

Select the required routing method.



The Magellan RoadMate will calculate the route. When the calculations are complete, the Map screen will be displayed.

# Chapter 13: Selecting Destinations

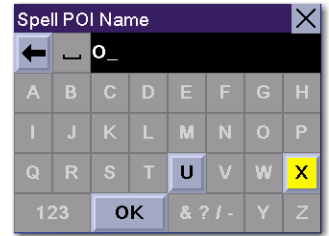
## 13.6.2.3 Spell Name

If you select Spell Name, the POIs in the selected category which match the name you entered will be listed. Select **Spell Name**.



Enter the name of the POI. When you have finished, select **OK**.

Select Nearest to list the POIs matching the characters entered that are nearest to your current position.



Select List by Town to list the POIs matching the characters entered that are nearest to a particular town. Enter the name of the town. When you have finished, select OK. Select the town from the list.

Use the Navigation key to scroll the list up or down (if necessary) and select the required POI.

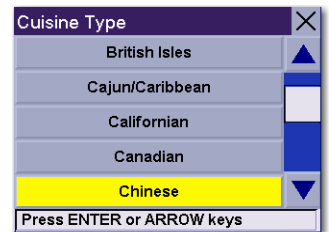


Select the required routing method.

The Magellan RoadMate will calculate the route. When the calculations are complete, the Map screen will be displayed.

## 13.6.2.4 Cuisine Type

When selecting restaurants, you will be presented with an additional method for finding POIs. Select Cuisine Type. Use the Navigation key to select the type of restaurant that you prefer. The results will be sorted from closest to farthest from your current position.



Use the Navigation key to scroll the list up or down (if necessary) and select the required POI.

Select the required routing method.



The Magellan RoadMate will calculate the route. When the calculations are complete, the Map screen will be displayed.

## 13.6.3 Custom POIs

Please refer to page 23 for information on creating and loading Custom POIs.

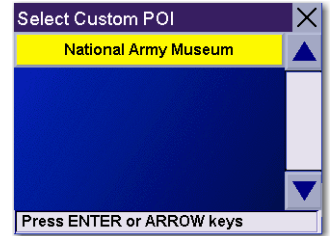
From the Destination screen, select **Points Of Interest**, then select **Custom POIs**.

# Chapter 13: Selecting Destinations

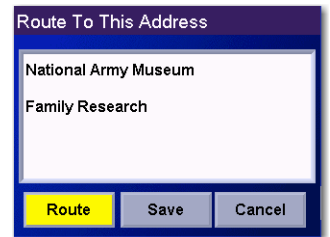
Select the category.



If the POI list has more than 15 returns, you can narrow down the search further by selecting either Nearest or Spell Name. Select the required POI from the list.



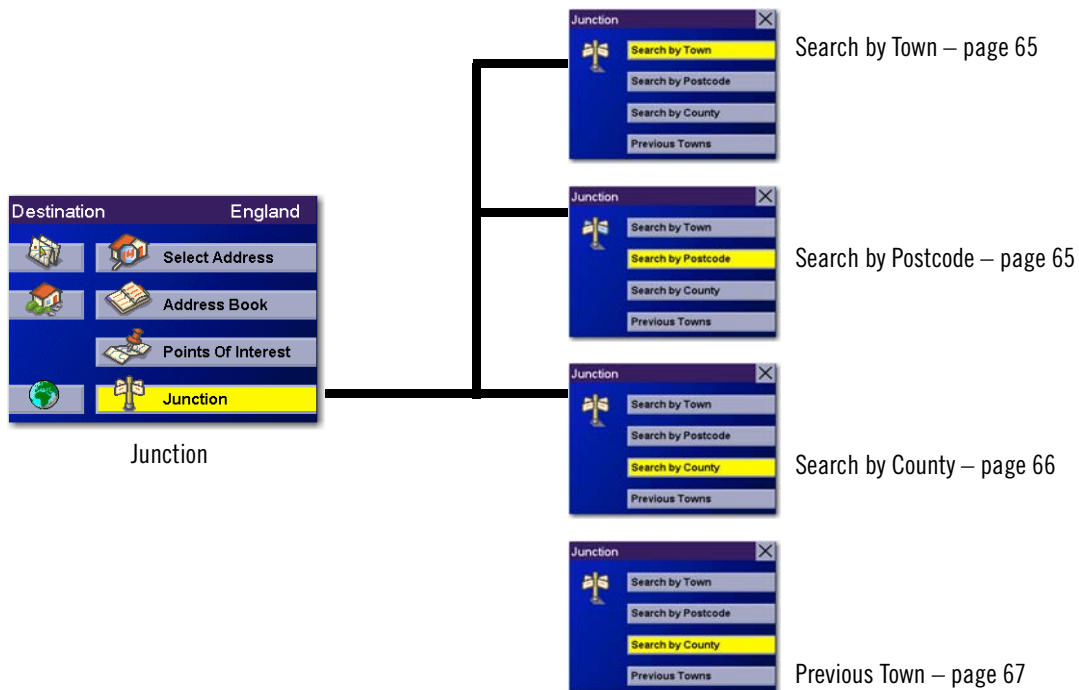
Select **Route** to go to the selected Address, or select **Cancel** to return to the Select Custom POI menu.



Select the required routing method.

The Magellan RoadMate will calculate the route. When the calculations are complete, the Map screen will be displayed.

## 13.7 Selecting a junction as a Destination



A junction of two streets can be used as a destination for your trip. You can search for the junction whether you know the town or not. If you know the town, you can start there; if you are unsure of the town, you can start with the county.



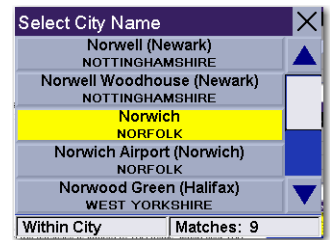
# Chapter 13: Selecting Destinations

## 13.7.1 Search by Town

From the Destination screen, select **Junction**, then select **Search by Town**.

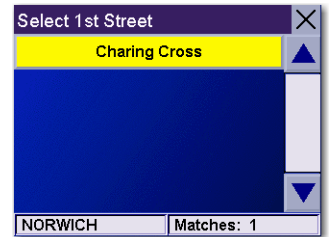
Enter characters that start a word within the town name (see “Multi-Word Indexing” on page 31). Select **OK**.

Use the Navigation key to scroll the list up or down (if necessary) and select the required town.



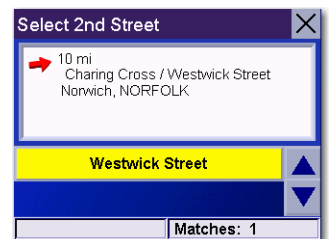
Enter characters that start a word within the street name (see “Multi-Word Indexing” on page 31). Do not enter prefixes such as “North” or “N” or the type of street such as “Ave.” or “Street”. Select **OK**.

Use the Navigation key to scroll the list up or down and select the first street from the list.



Enter characters that start a word within the street name (see “Multi-Word Indexing” on page 31). Do not enter prefixes such as “North” or “N” or the type of street such as “Ave.” or “Street”. Select **OK**.

Use the Navigation key to scroll the list up or down (if necessary) and select the second street from the list.



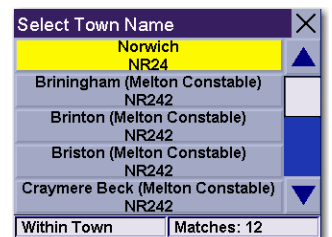
Select the required routing method.

The Magellan RoadMate will calculate the route. When the calculations are complete, the Map screen will be displayed.

## 13.7.2 Search by Postcode

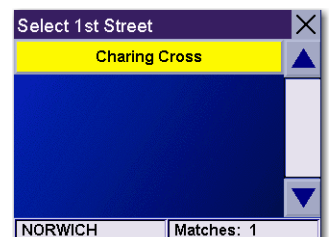
From the Destination screen, select **Junction**, then select **Search by Postcode**.

Enter the Postcode and select **OK**, then select the town.



Enter characters that start a word within the street name (see “Multi-Word Indexing” on page 31). Do not enter prefixes such as “North” or “N” or the type of street such as “Ave.” or “Street”. Select **OK**.

Use the Navigation key to scroll the list up or down and select the first street from the list.



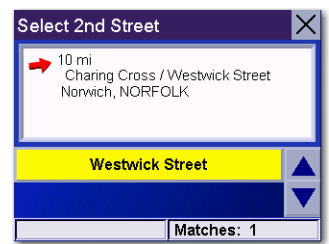
# Chapter 13: Selecting Destinations

Enter characters that start a word within the street name (see “Multi-Word Indexing” on page 31). Do not enter prefixes such as “North” or “N” or the type of street such as “Ave.” or “Street”. Select **OK**.

Use the Navigation key to scroll the list up or down (if necessary) and select the second street from the list.

Select the required routing method.

The Magellan RoadMate will calculate the route. When the calculations are complete, the Map screen will be displayed.

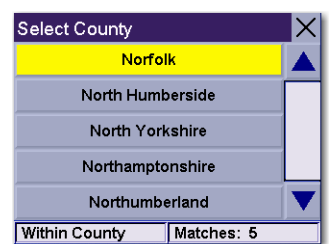


## 13.7.3 Search by County

From the Destination screen, select **Junction**, then select **Search by County**.

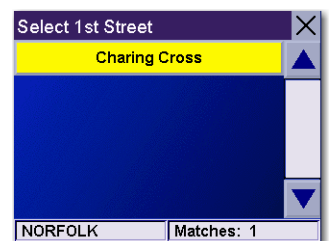
Enter the first few characters of the county and select **OK**.

Use the Navigation key to scroll the list up or down (if necessary) and select the county from the list.



Enter characters that start a word within the street name (see “Multi-Word Indexing” on page 31). Do not enter prefixes such as “North” or “N” or the type of street such as “Ave.” or “Street”. Select **OK**.

Use the Navigation key to scroll the list up or down (if necessary) and select the first street from the list.

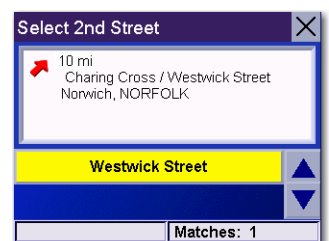


Enter characters that start a word within the street name (see “Multi-Word Indexing” on page 31). Do not enter prefixes such as “North” or “N” or the type of street such as “Ave.” or “Street”. Select **OK**.

Use the Navigation key to scroll the list up or down (if necessary) and select the second street from the list.

Select the required routing method.

The Magellan RoadMate will calculate the route. When the calculations are complete, the Map screen will be displayed.





# Chapter 14: Navigation Options

Navigation Options are only available when you are in Navigation Mode. When you go to the Main Menu from the Music Player or the Photo Viewer, this option will be greyed out.

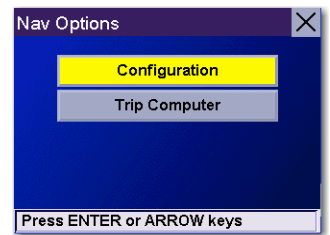
To access these features, press the **MENU** key on the unit and select **Navigation Options**.



## 14.1 Configuration

Configuration enables you to customise the advanced navigation features of the Magellan RoadMate.

Select **Configuration**.



### 14.1.1 POI Selection

From the POI Selection menu, you can choose which icons to display on the Map screen. We recommend that you are selective about which icons you choose to display to prevent your map screen from becoming cluttered. For a list of POI Categories, see “POI Categories” on page 88.

Select **POI Selection**.

Select **Mark All** to display all POI icons on the Map screen.

Select **Clear All** if you would like not to have any POI icons displayed on the Map screen.

You can also select individual icons to display or hide on the Map screen. When you have finished, press the **ESCAPE** key to return to the Configuration menu.



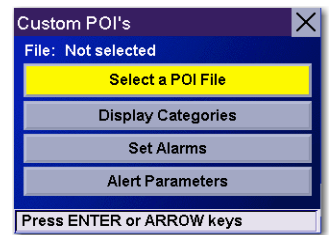
### 14.1.2 Custom POIs

The Custom POI menu enables you to select POIs that you have previously loaded into your Magellan RoadMate using the Magellan RoadMate POI Manager software (see page 23). The following instructions assume that you have loaded one or more custom POIs into your Magellan RoadMate.

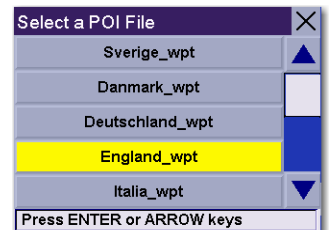
Select **Custom POIs**.

# Chapter 14: Navigation Options

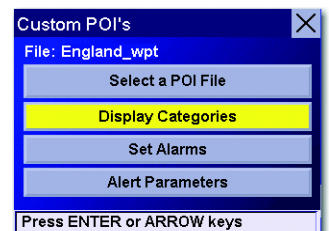
Select **Select a POI File**.



Use the Navigation key to scroll the list up or down (if necessary) and select a POI file. With the file selected, you will be returned to the Custom POIs menu.



Select **Display Categories**.



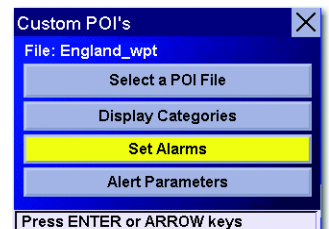
The categories that you created will be displayed in the same way as the built-in POIs.

Select **Mark All** to display all POI icons on the Map screen. Select **Clear All** if you would like not to have any POI icons displayed on the Map screen. You can also select individual icons to display or hide on the Map screen.



When you have finished, press the **ESCAPE** key to return to the Custom POIs menu.

You can also be alerted when you approach a custom POI. The Set Alarm function works for Custom POIs only and only if the POI has been selected to show on the Map screen. Select **Set Alarms**.

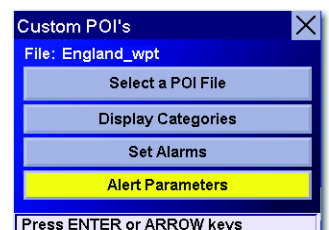


Again, you can select all, none or individual POIs to set an alert for. Select **Mark All** to set an alert for all custom POI icons on the Map screen. Select **Clear All** if you would like not to have any alerts set for custom POI icons displayed on the Map screen. You can also select individual categories to set an alert for.



When you have finished, press the **ESCAPE** key to return to the Custom POIs menu.

With the POI alerts set, you can now choose at what point you will be alerted. Select **Alert Parameters**.

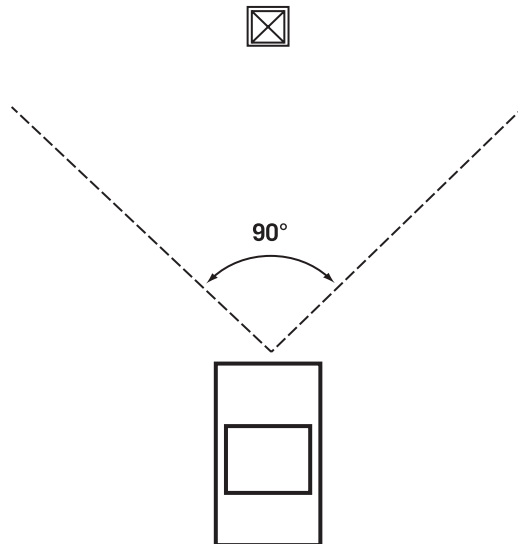


# Chapter 14: Navigation Options

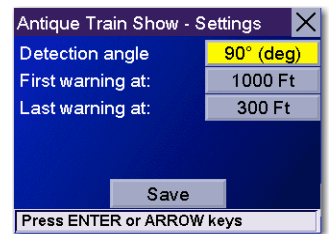
Select the POI category to customise.



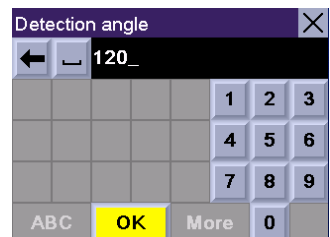
The Detection Angle is set to alert you when you are within so many degrees of the POI.



Select **Detection Angle**.

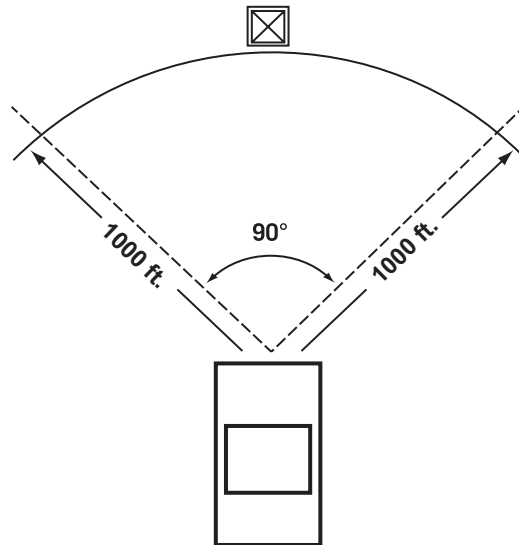


Use the numeric keypad to enter the number of degrees at which to set the alert. When you have finished, select **OK**.

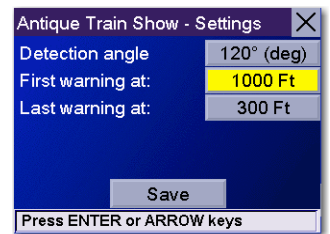


# Chapter 14: Navigation Options

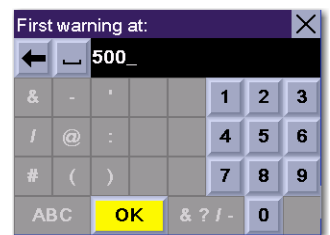
The First Warning is set to alert you when you are within a certain number of feet of the POI.



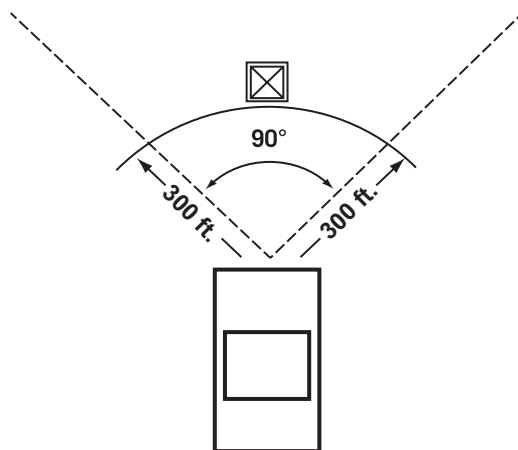
Select **First Warning**.



Use the numeric keypad to enter the number of feet at which to alert you. When you have finished, select **OK**.

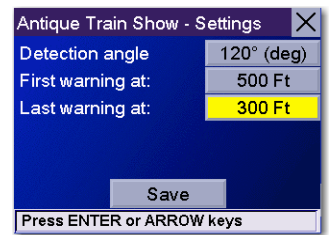


The Last Warning is set as a final alert when you are within a certain number of feet of the POI.

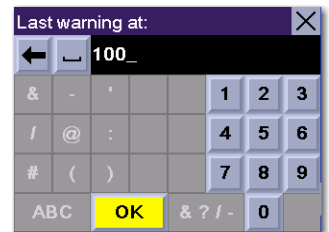


# Chapter 14: Navigation Options

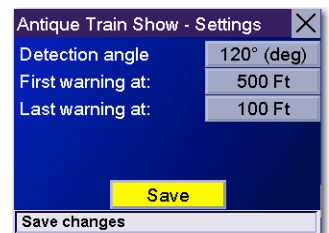
Select **Last Warning**.



Use the numeric keypad to enter the number of feet at which to alert you. When you have finished, select **OK**.



When you have set the parameters to your satisfaction, select **Save**.



## 14.1.3 Map Options

Map Options enable you to determine the behaviour of the Map while you are driving.

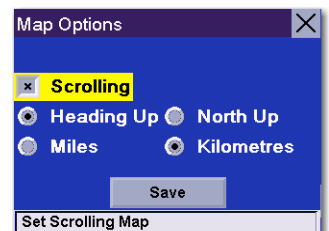
Select **Map Options**.

With **Scrolling** enabled, the vehicle position icon will always remain in the same position with the map scrolling or moving when the vehicle is in motion. With **Scrolling** disabled, the vehicle position icon will move forward slightly, then the map will scroll down. The display will be faster if scrolling is disabled.

**Heading Up** sets the map display so that the direction of travel is always at the top of the screen. **North Up** sets the map display so that North is always at the top of the screen. North Up is only available in 2D map view mode.

Select **Miles** or **Kilometres** as the unit of measurement for distance.

When you have finished, select **Save**.





# Chapter 14: Navigation Options

## 14.1.4 TrueView Options

TrueView options enable you to control how and when the TrueView screen will be displayed. Select TrueView Options.

Select Split TrueView to enable the TrueView/Map Screen mode. See “TrueView 3D Screen” on page 35.

Select Disable TrueView if you do not want the TrueView screen to appear during routing.

Select Manual TrueView to show the TrueView screen only when you press the View key.

Select Auto TrueView to have the TrueView screen appear automatically when the next segment is approaching.

When you have finished, select **Save**.



## 14.1.5 Select Map Colour

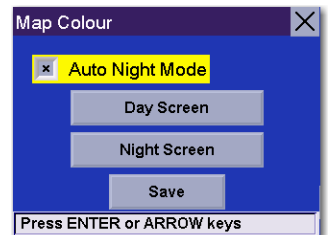
Select **Select Map Colour**.

With **Automatic Night Mode** enabled, the Magellan RoadMate will switch between a Day screen and a Night screen based on sunrise and sunset times for your current location.

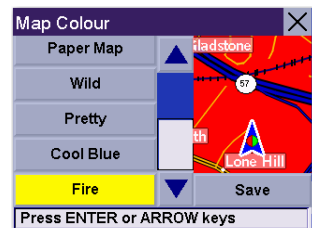
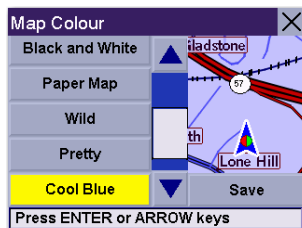
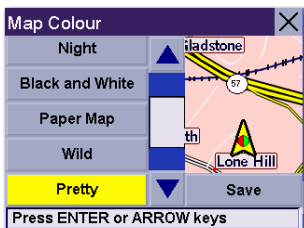
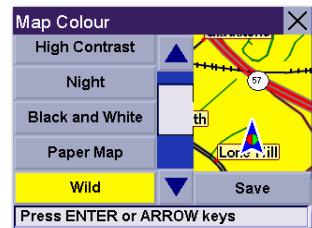
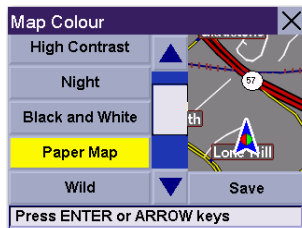
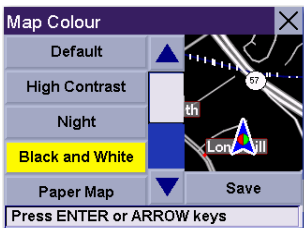
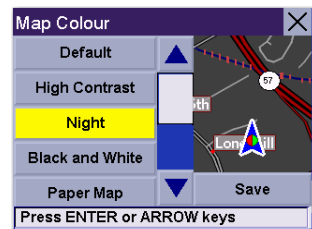
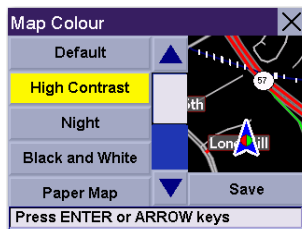
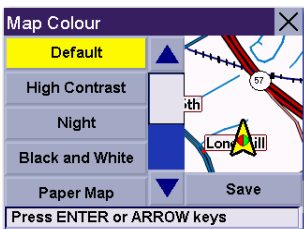
Select **Day Screen** to choose a colour scheme for the map while you are driving during the day.

Select **Night Screen** to select a colour scheme for driving at night.

When you have finished, select **Save**.

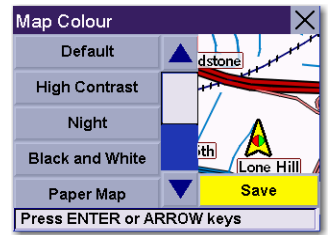


Select from nine available colour schemes:



# Chapter 14: Navigation Options

When you have finished, select **Save** and you will be returned to the Select Map Colour menu.



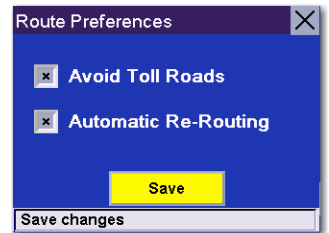
## 14.1.6 Route Preferences

Route Preferences enable you to set parameters for the Magellan RoadMate to follow when calculating a route. Select **Route Preferences**.

**Avoid Toll Roads** instructs Magellan RoadMate to avoid known toll roads when calculating a route.

**Automatic Re-Route** will cause the Magellan RoadMate to try up to three times to automatically re-route to the destination when it has detected that the vehicle has deviated from the calculated route.

When you have finished, select **Save**.

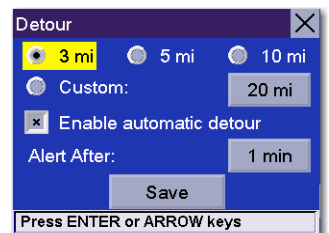


## 14.1.7 Detour Options

The Magellan RoadMate comes equipped with SmartDetour. If you are driving on the motorway with SmartDetour enabled and your speed drops below 15 mph, you may press the detour icon on the Map screen so that the Magellan RoadMate can calculate an alternative route around traffic.

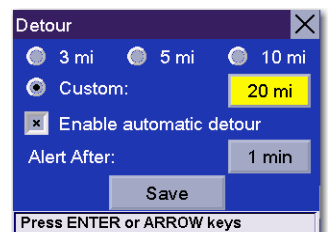
Select **Detour Options**.

Select the distance of the detour. You can select from a preset distance of three miles, five miles or ten miles.



You can also select a custom distance. Select **Custom**, then select the button to the right to enter a custom distance.

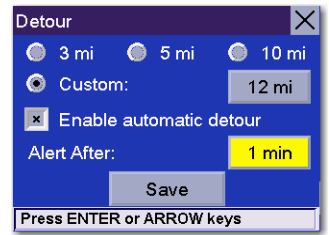
Enter the number of miles and select **OK**.



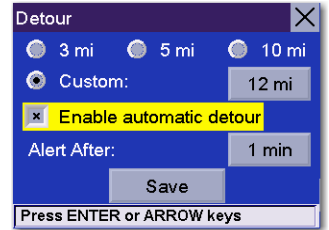
# Chapter 14: Navigation Options

Next, select the amount of time the Magellan RoadMate will wait before alerting you. Select the **Time** button.

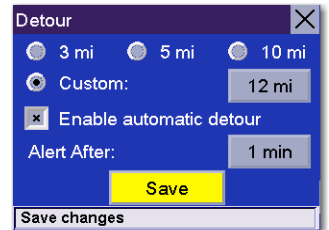
Enter the number of minutes and select **OK**.



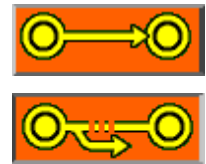
Enable Automatic Detour is selected by default as shown by the ticked checkbox. To disable automatic detour, deselect **Enable Automatic Detour**.



When you have finished, select **Save**.



When you encounter traffic and the set time has elapsed, the Detour icon will flash on the Map screen. Touch the icon on the screen to allow the Magellan RoadMate to calculate the detour. You can choose to ignore the Detour alert. After one minute it will stop flashing until the set time has elapsed again when it will alert you once more.



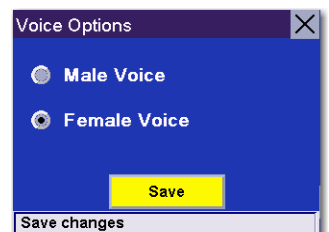
## 14.1.8 Voice Options

From the voice options menu, you can opt to have your voice prompts announced in either a male or female voice in the language that is currently enabled (refer to “Language” on page 85).

Select **Voice Options**.

Choose **Male Voice** or **Female Voice**.

When you have finished, select **Save**.



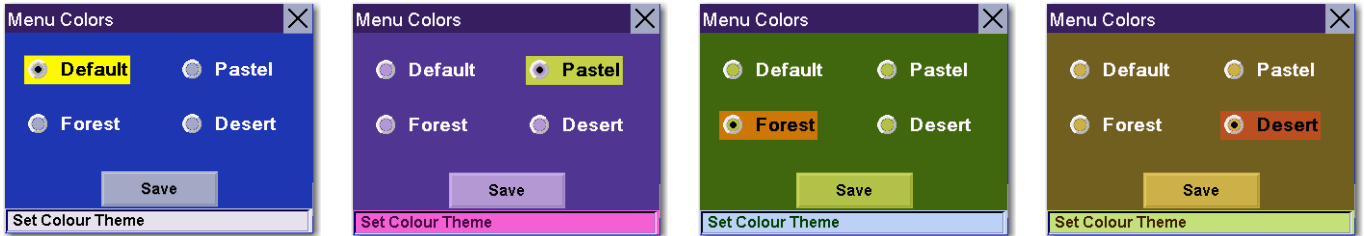
# Chapter 14: Navigation Options

## 14.1.9 Menu Colours

You can change the colour of the menu screens by selecting one of four colour schemes.

Select **Menu Colours**.

Select the required colour scheme.



When you have finished, select **Save**.

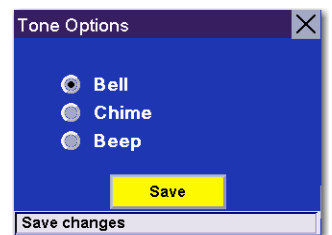
## 14.1.10 Tone Options

As you approach a segment, an audible alert will sound to tell you to negotiate the segment.

Select **Tone Options**.

Select either **Bell**, **Chime** or **Beep**.

When you have finished, select **Save**.

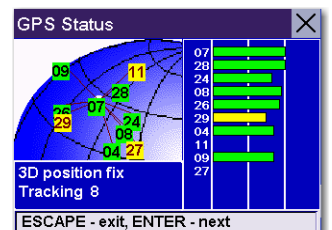


## 14.1.11 GPS Options

GPS Options provide you with information on the satellite signal as well as the ability to speed up signal acquisition time.

### 14.1.11.1 GPS Status

The GPS Status screen is available by pressing the GPS Signal icon on the Map screen (page 33), as well as through the GPS Options menu. GPS Status monitors the satellite signal. For more information on the GPS Status screens refer to "GPS Status Screen" on page 90.

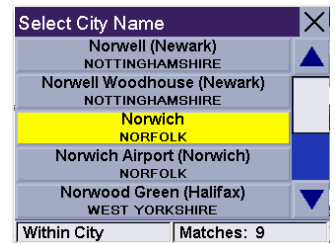


# Chapter 14: Navigation Options

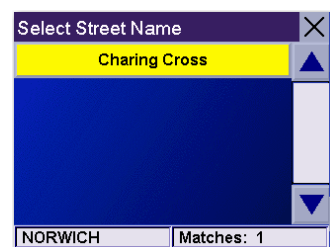
## 14.1.11.2 Set GPS Position

Set GPS Position enables you to set the location of the Current Position icon manually. If you have travelled a long distance with the unit turned off, it may take some time for the unit to reacquire a satellite signal. By manually setting the position of the unit, you are telling the unit where you are and this will speed up the satellite signal acquisition. Ensure that you first select the country that you are in by pressing the Globe button on the Destination screen (see “Country Selection” on page 41). Select **Set GPS Position**.

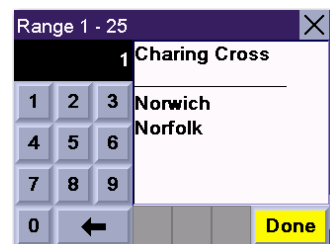
Enter characters that start a word within the town name (see “Multi-Word Indexing” on page 31). Select **OK**. Use the Navigation key to scroll the list up or down (if necessary) and select the required town.



Enter characters that start a word within the street name (see “Multi-Word Indexing” on page 31). Do not enter prefixes such as “North” or “N”, or the type of street such as “Ave.” or “Street”. Select **OK**. Use the Navigation key to scroll the list up or down (if necessary) and select the required street.



Enter the street address. The acceptable range of numbers will be displayed at the top of the screen. If you do not know the exact address, just select **Done** and the Magellan RoadMate will use the lowest number in the range. Select **Done** to continue. You will be returned to the Configuration menu.



Go to the Map screen. Your current position is now set to the address you entered.

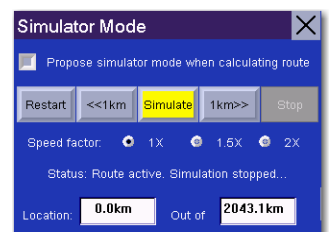
## 14.1.12 Simulator Mode

In Simulator Mode, you can demonstrate the capabilities of the Magellan RoadMate without actually driving. In order for the simulation to work, you must set a route first. Select **Simulator Mode**.

Select **Simulate** to begin the simulation.

Set the speed variance of the simulation: x1 will “drive” at normal speed using known speed limits; x1.5 will “drive” at one and a half times the normal speed; x2 will “drive” at twice the normal speed.

Return to the Map screen to view the simulation.



To disable Simulator Mode, select **Stop**, or when the power is turned off the Simulator will stop.

# Chapter 14: Navigation Options

## 14.1.13 Map Regions

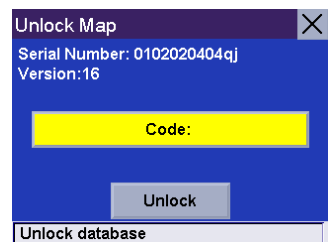
The Magellan RoadMate 800 comes preloaded with North American and European map data. If you are travelling to North America, you can take your Magellan RoadMate with you and use it while you are driving abroad. To unlock the North American map, contact our Customer Service department for pricing and unlock-code information or visit our Web site at [www.magellanGPS.com](http://www.magellanGPS.com).

Select **Map Regions**.

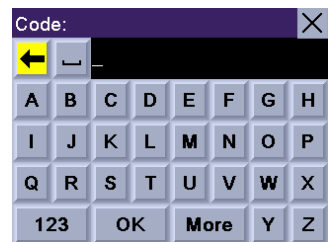
Select **USA - Canada** and then select **Unlock**.



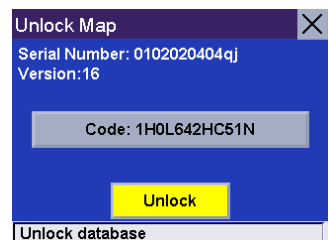
Select **Code**.



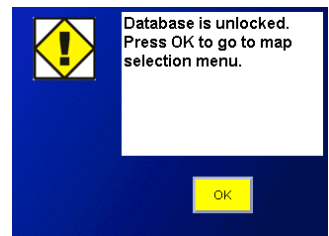
Use the keypad to enter the unlock code. When you have finished, select **OK**.



Select **Unlock**.



The database will be unlocked. Select **OK**.

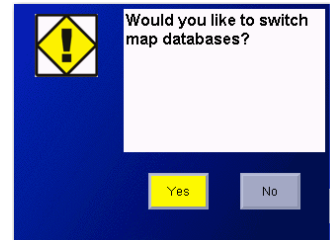


# Chapter 14: Navigation Options

Select **USA - Canada**, then select **Switch**.



Select **Yes**. After the unit has powered down, turn the unit back on and the new map will begin loading. When it has finished, you will have access to the North American maps.



## 14.1.14 Automatic Volume

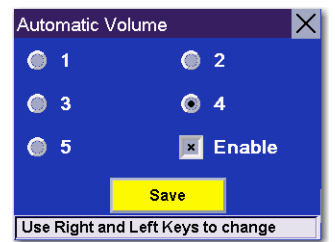
The Magellan RoadMate can be set to automatically increase the volume when the vehicle exceeds 45 mph to compensate for road noise.

Select **Automatic Volume**.

Select the number increment by which to increase the volume.

Select **Enable**.

When you have finished, select **Save**.



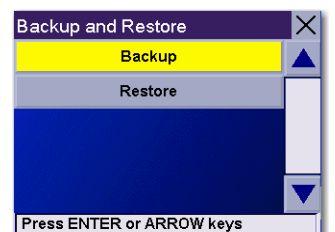
## 14.1.15 Backup and Restore

The Magellan RoadMate 800 has the capability to back up your information (Address Book and Previous Destinations, etc.) to an optional storage card.

### 14.1.15.1 Backup

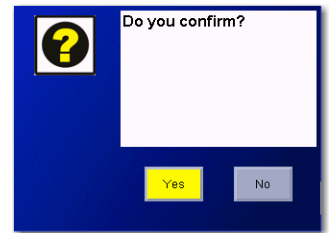
Select **Backup and Restore**, then select **Backup**.

If you have not already inserted a card, you will be prompted to do so. Insert a card and reselect **Backup**.



# Chapter 14: Navigation Options

A dialog box will appear asking you to confirm your selection. Select **Yes**.

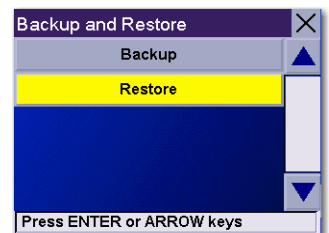
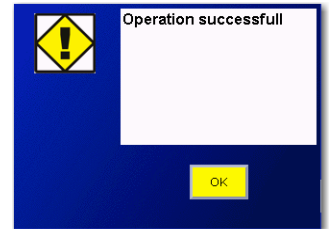


The files will be copied to the storage card.

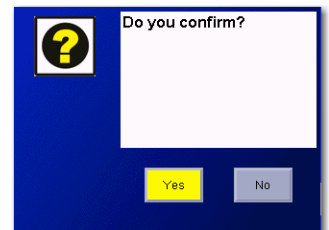
## 14.1.15.2 Restore

To restore the files to the hard disk, select **Backup and Restore**, then select **Restore**.

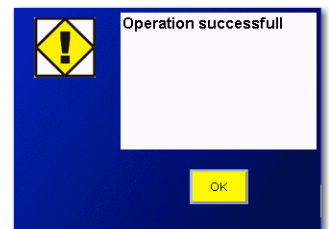
If you do not have a card inserted, you will be prompted to insert a card. Insert a card and reselect **Restore**. Ensure that your storage card is unlocked to allow data to be written to it.



A dialog box will appear asking you to confirm your selection. Select **Yes**.



The files will be copied to the hard disk.

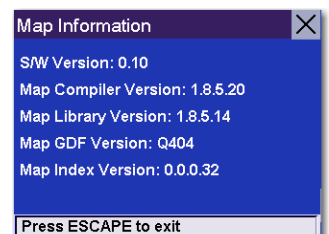


## 14.1.16 Map Information

Product Information displays information about the map and database installed in your Magellan RoadMate. This information helps our Technical Support Representative find a solution to whatever problem you may have.

## 14.2 Trip Computer

The Trip Computer is a valuable tool for recording the mileage and time spent driving while on business or on holiday. The information for the trip can be saved and viewed at any time, providing you with easy access to information on your current trip, as well as previous trips.



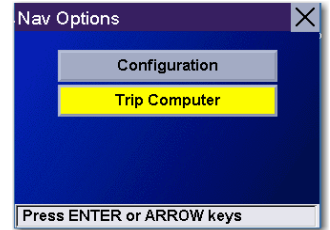


# Chapter 14: Navigation Options

To access these features, press the **MENU** key on the unit and select **Navigation Options**.



Select **Trip Computer**.

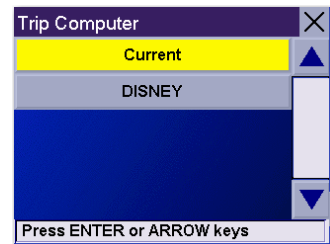


## 14.2.1 Current Trip

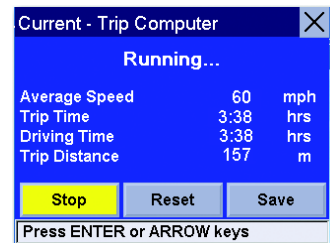
When you begin a new trip and you need to record the information, access the Trip Computer. There you can save the information displayed for the current trip (if needed) and reset the Trip Computer in preparation for your new trip.

Select **Trip Computer**.

Select **Current** from the list of saved Trip Reports.

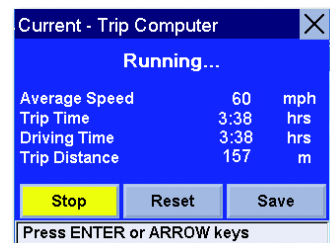


The Trip Computer is always in a “Running” state. The information for the current trip will be displayed.

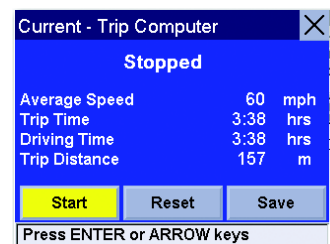


### 14.2.1.1 Stopping or Starting the Trip Computer

The Trip Computer can be stopped and started at any time. If the Trip Computer is currently running, select **Stop**. The Trip Computer will stop recording until it is restarted or reset.



While the Trip Computer is in a “Stopped” state, select **Start** to continue recording the current trip or select reset to begin a new trip.



# Chapter 14: Navigation Options

## 14.2.1.2 Saving the Current Trip Report

When you have finished with your trip, you can save the information for later viewing. Select **Save** at any time.

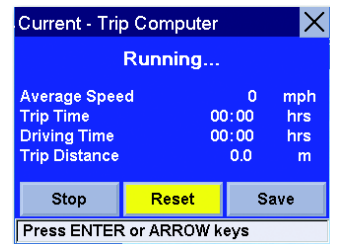


Use the keypad to enter a name for the Trip Report and select **OK** when you have finished.



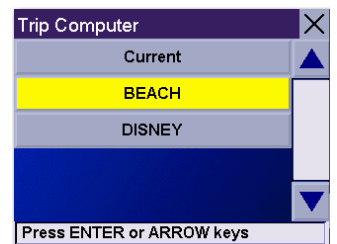
## 14.2.1.3 Resetting the Trip Computer

Before you begin a new trip that you want to record, you need to reset the Trip Computer first. Select Reset and the information will be reset to zero. The Trip Computer will remain in a "Running" state.

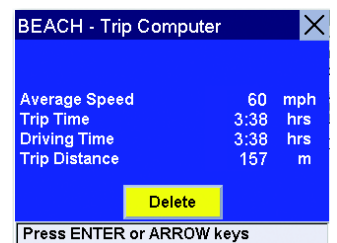


## 14.2.1.4 Viewing a Saved Trip Report

From the Trip Computer screen, select the Trip Report that you would like to view.



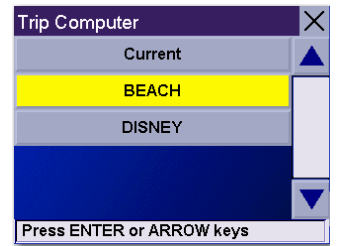
The saved Trip Report will be displayed. Press the **ESCAPE** key when you have finished viewing the trip and you will be returned to the Trip Computer screen.



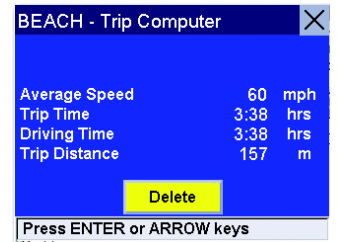
# Chapter 14: Navigation Options

## 14.2.1.5 Deleting a Trip Report

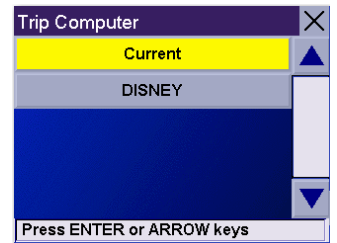
Select the Trip Report to be deleted.



Select **Delete**.

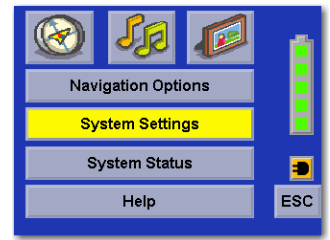


The trip will be deleted and you will be returned to the Trip Computer screen.



# Chapter 15: System Settings

The System Settings Menu contains system wide customisation features, including: Brightness, Power Management, Password and Language.



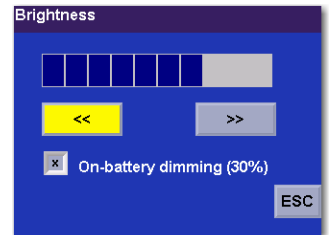
To access these features, press the **MENU** key on the unit and select **System Settings**.

## 15.1 Brightness

To change how light the screen appears, select **Brightness**.

Use the right arrow to make the screen appear lighter and the left arrow make the screen appear darker.

With On-battery dimming enabled, the screen will decrease in brightness by 10% to save some battery power.



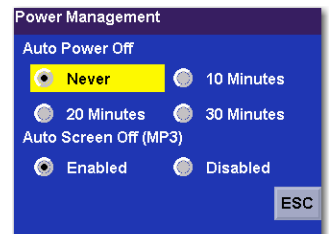
When you have finished, select **ESC**.

## 15.2 Power Management

The Power Management features enable you to customise the features that will conserve battery power and display life. Select **Power Management**.

Select the time period to put the unit in “sleep” mode.

Select to enable or disable the option for turning the screen off when music is being played.



When you have finished, select **ESC**.

## 15.3 Password

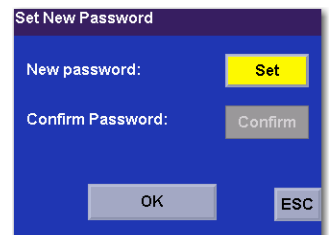
### 15.3.1 Set Password

You can protect the unit from unwanted use by enabling a password. Select **Password**.

Select **Set** to enter a password. Use the keypad to enter the required password. When you have finished, select **OK**.

Select **Confirm** to re-enter the password. Use the keypad to re-enter the password exactly as you entered it the first time. When you have finished, select **OK**.

Select **OK** to activate the password. To return to the System Settings menu without setting the password, select **ESC**.



Once the password is enabled, you will be required to enter it when the unit is turned on or when it wakes up from “sleep” mode.

### 15.3.2 Remove Password

Select **Password** and use the keyboard to enter the password. When you have finished, select **OK**. Then, from the Set New Password screen, select **OK**.

# Chapter 15: System Settings

## 15.4 Language

To change the language for the menu text and voice prompts for navigation, select **Language**.

Select the required language. A dialog box will appear asking you to confirm your selection. Select **Yes**.

The unit will restart itself with the new language enabled.

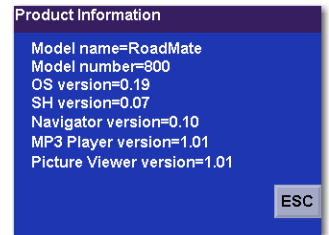


# Chapter 16: System Status

The System Status menu offers you further options to check the performance of your Magellan RoadMate.

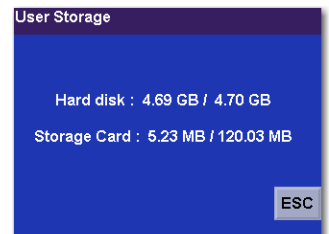
## 16.1 Product Information

Select Product Information to show the current application software versions. Also, the current hardware and firmware version will be displayed.



## 16.2 User Storage

Select User Storage to display the available space and total space on the hard disk and, if inserted, the storage card. Note: Although 5 GB of storage on the unit hard drive is available the actual storage may vary and could be slightly less.



## 16.3 Diagnostics

Diagnostics enables you to test key performance elements of the Magellan RoadMate.

### 16.3.1 Audio Test

The Audio Test will check the performance of the built-in speaker.

### 16.3.2 Touchscreen Test

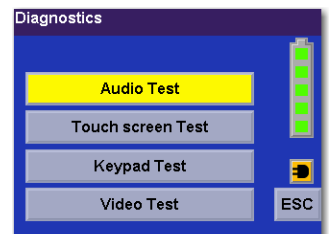
The Touchscreen test will enable you to recalibrate the touchscreen should it not be tracking properly.

### 16.3.3 Keypad Test

The Keypad test is used to ascertain whether the buttons on the unit are functioning or not.

### 16.3.4 Video Test

The Video test is used to ascertain whether the screen is displaying colours properly or not.



# Chapter 17: Help

The Help feature provides you with an interactive tutorial on the features and functions of the Magellan RoadMate along with contact information should you need assistance.

## 17.1 Quick Tips

Quick Tips for New Users provides information in the following categories on basic usage and how to get the best signal reception:

- Getting Started
- Unobstructed View
- Remain Stationary
- Antenna Position
- Entering a Destination
- Other Important Info
- Registering Your Product

## 17.2 Contact Us

If you experience problems using your Magellan RoadMate, you can contact us at the numbers displayed.



# Appendix



## \POI Categories

The Magellan RoadMate POI database has 37 different categories. The icons will appear on the Map screen (if enabled):

	Restaurant	Fast food, cafes and food shops
	Bank/Cash Point	Most financial services
	Petrol Station	Most fuel services
	Roadside Assistance	Towing companies
	Hospital/Polyclinic	Most medical services
	Vehicle Services	Repair shops, tyre shops and oil changes
	Airport	International and Domestic airports
	Camping & Caravanning	Campgrounds, camping areas and caravan parks
	Car Rental	Car rental companies
	Casino	Gambling venues
	Town Centre	The geographical centre of a selected town
	Clothing	Clothing retail shops
	Convention Centre	Major Convention Centres
	Education	Schools, Colleges and other learning institutions
	Emergency Services	Police Stations, Fire Stations and A and E Departments
	Entertainment	Cinemas, live performance venues
	Golf Course	Private and public courses
	Grocery	Major chains and local markets
	Hair & Beauty	Salons and beauty parlours
	Health Care	Doctors' surgeries and pharmacies
	Home & Garden	Garden centres and do-it-yourself centres
	Hotel or Motel	Most overnight stay locations
	Marina	Docks and harbours
	Misc. Services	Other services not categorised
	Nightlife	Dance halls, pubs, nightclubs
	Open Car Park	Parking spaces and garages
	Parks	County, regional and local parks
	Professional Services	Business office locations
	Public Buildings	Libraries, museums and government buildings



# Appendix

	Rest Area	Lay-bys along major highways
	Shopping	Shopping malls and other retail stores
	Ski Resorts	Most major ski resorts
	Sports & Recreation	Stadiums, parks, lakes
	Tourist Attraction	Places most visited by tourists
	Transportation	Bus and train stations
	Vineyard	Vineyards and tasting locations
	Worship	Churches, temples, mosques

When selecting restaurants, you can further narrow the search by cuisine type such as French, Italian, Greek or Mexican, etc.

## Specifications

<b>Dimensions:</b>	8.0cm x 15.9cm x 3.9cm 3.1" x 6.2" x 1.5"
<b>Weight:</b>	307g 10.8 oz.
<b>Display:</b>	3.5" TFT colour touch screen display, 55.8mm x 73.9mm (2.2" x 2.9")
<b>Screen Resolution:</b>	320 x 240 QVGA; 32,000 colours
<b>Storage:</b>	20 GB Hard Drive (up to 5 GB useable storage for music, images and custom POIs) Slot for optional storage card
<b>Accepted Card Media:</b>	Secure Digital (SD) or Multimedia Card (MMC)
<b>Audio:</b>	Integrated Speaker with integrated stereo headphone jack
<b>GPS Antenna:</b>	Integrated with optional external antenna connection
<b>Battery:</b>	Li-Ion
<b>USB Interface:</b>	2.0
<b>Operating Temperature:</b>	-5° to +55°C 23°F to 131°F
<b>Storage Temperature:</b>	-20°C to +70°C -4°F to 158°F
<b>Humidity:</b>	50% ± 20% ambient room

# Appendix

## PC Requirements

- IBM Compatible PC, Pentium or higher
- Microsoft ® Windows® 2000 or XP
- 128 MB RAM
- CD Drive for Software Installation
- DVD Drive for Map Upgrades
- USB Port

## GPS Status Screen

### GPS STATUS Screen Structure-first page

CH	PRN	AZ	EL	SNR	U/N
01	d1	d2	d3	d4	c1
02	d1	d2	d3	d4	c1
03	d1	d2	d3	d4	c1
04	d1	d2	d3	d4	c1
05	d1	d2	d3	d4	c1
06	d1	d2	d3	d4	c1
07	d1	d2	d3	d4	c1
08	d1	d2	d3	d4	c1
09	d1	d2	d3	d4	c1
10	d1	d2	d3	d4	c1
11	d1	d2	d3	d4	c1
12	d1	d2	d3	d4	c1
13	d1	d2	d3	d4	c1
14	d1	d2	d3	d4	c1

It is ordered by the channel number from 1 to 12.

Where:

- d1: Satellite PRN number, with “e” or “E” to the right means got ephemeris data, “v” or “V” to the right means got verified ephemeris data (double check). “E” or “V” also means got satellite time for this channel.
- d2: Azimuth, in degrees
- d3: Elevation angle, in degrees
- d4: SNR (signal to noise ratio), it is ratio-Hz, not dB unit
- c1: U – Used for position fix, U – Not used for position fix

# Appendix

## Bad fix code

- 0 PVT\_OK :good fix
- 2 ILLEGAL\_ALT: illegal altitude < -10km or > 17.5km
- 4 POSITION\_JUMP: too big position jump between two epoch (300 miles)
- 5 ILLEGAL\_VELOCITY\_OR\_ALT: max velocity 951mile
- 7 TOO\_BIG\_ACCELERATION max 15m around 1.5g
- 8 TOO\_SMALL\_ALTITUDE -10000 m
- 9 TOO\_BIG\_ALTITUDE 17,500 m
- 10 TOO\_BIG\_PDOP max PDOP 50
- 11 SATS\_BELOW\_MASK\_ANGLE satellite elevation angle is below mask angle
- 16 ILL\_DEFINED\_3D\_MATRIX 3X3 matrix can not be inverted in 3D fix
- 17 ILL\_DEFINED\_2D\_MATRIX 2X2 matrix can not be inverted in 2D fix
- 20 NO\_SAT\_TIME no satellite time
- 23 NOT\_ENOUGH\_SATS no enough satellite for 2D or 3D fix
- 24 CANNOT\_SELECT\_FIX\_TYPE
- 30 VELOCITY\_2D\_ONLY 2 satellite fix only for velocity, no position fix
- 31 BAD\_VELOCITY\_PDOP 50 too big pdop for velocity
- 32 TOO\_MANY\_SATS\_FOR\_2D\_VEL there are 4 or more satellites, but 2D fix provided
- 51 WRONG\_NUMSAT number of satellite for fix > 12 or < 2
- 56 LOOP\_3D\_NOT\_CONVERGING 3D initial fix is not convergent
- 57 MILLISECOND\_ERROR millisecond jump happened
- 58 LOOP\_2D\_NOT\_CONVERGING 2D initial fix is not convergent
- 59 BAD\_RANGE\_CHITEST; range post-fix residuals chi-test failed
- 60 BAD\_DOPPLER\_CHITEST doppler post-fix residuals chi-test failed
- 61 OSC\_DRIFT\_ERR too much clock drift 60HZ for XO, 7.5HZ for TCXO
- 62 BAD\_DOPPLER\_ERR too big Doppler errors 4m/s
- 63 BIG\_RANGE\_RESID 110m/40m depend on virtual ttagl/ DGPS factors
- 64 BIG\_DOPPLER\_RESID 0.7m/s
- 65 HUGE\_RANGE\_RESID 10km normal for postfit residuals for range
- 66 HUGE\_DOPPLER\_RESID 100m/s normal for postfit residuals for doppler

Usually, Bad code is 20 and 23. If fix is good, it would be 0.

# Appendix

## GPS STATUS Screen Structure - second page

Heading XXX (degree)            Speeding XX.X (meter per second)  
Current Lat: DDD.DDDDD W/E (current latitude, degree)  
Current Long: DDD.DDDDD N/S (current longitude, degree)  
Current altitude XXXX (altitude in mean sea level meter)    TFF XXXXs (Time-To-First-Fix in second)  
#Satellite (U/T) XX/XX (the number of satellite used and tracked)  
PDOP XX.X (Position Dilution Of Precision)  
VDOP XX.X (Vertical Dilution of Precision)  
TDOP XX.X (Time Dilution of Precision)  
HDOP XX.X (Horizontal Dilution of Precision)  
FOMS P/V/H (Figures Of Merits for position, velocity and heading in map matching)  
UTC TIME MM/DD/YY HH:MM:SS(UTC time without local zone)

# Appendix

## Typical GPS STATUS Screen Display

First Page

CH	PRN	AZ	EL	SNR	U/N
01	27V	311	54	334	U
02	03E	078	29	135	U
03	13e	079	81	204	U
04	20e	175	06	90	N
05	31v	119	34	179	U
06	01V	120	53	316	U
07	28V	220	13	152	U
08	08V	282	29	182	U
09	02V	046	27	173	N
10	84	255	12	0	N
11	10	325	06	47	N
12	72	105	13	34	N
13	134	255	12	50	N
14	122	105	13	63	N

Second Page

Heading 0            Speed 0.0 m/s

Current Lat: 34.10939 N

Current Long:117.82599 W

GPS Version:

Current altitude 255    TTFF 116s

#Satellite (U/T) 11/12

PDOP 2.3

VDOP 1.7

TTFF 0.0

HDOP 1.3

FOMS P/V/H 2

UTC TIME 08/16/2004 22:56:53

# Appendix

## Frequently Asked Questions

### ***Why is my street not showing up on the map?***

The Magellan RoadMate uses the most current available map data. Chances are, your street is in a new housing development or the street is new. Map updates are made available about twice per year.

### ***I know there is a petrol station on this street corner, why is there no icon for it on the map?***

Check your POI settings and make sure you have the necessary POI checked to make it visible on the map. See “POI Selection” on page 68.

The Magellan RoadMate uses the latest POI data available. Chances are that the POI you are looking for is relatively new and has not been added to the database. If this is not the case, it may have been overlooked or changed since the POI database was created. You can add custom POIs to your Magellan RoadMate to make up for those you route to often. See “Chapter 10: Magellan RoadMate POI Manager” on page 23 and “Custom POIs” on page 68.

### ***The GPS signal is weak. What is going on?***

You may be driving through an area that has tall buildings or trees or a canyon or a tunnel. These conditions may interfere with satellite signals. Wait a few moments and the signal should get better as more satellites are acquired. Or, you may need to reposition your antenna. Rotate the antenna upward slightly and wait a moment. If the signal does not improve, continue to rotate the antenna. If the problem persists, there may be a problem with the antenna. Contact Technical Support.

### ***Why is an address that I know I routed to not in the Previous Destinations list?***

The Previous Destinations list stores the last 50 places you routed to. When you reach number 51, the first destination on the list will be removed and each successive destination will be moved up.